

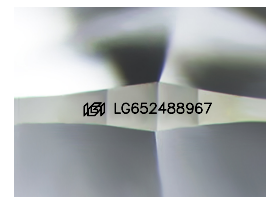
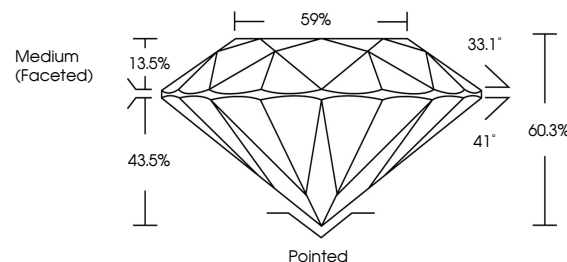


ELECTRONIC COPY

LABORATORY GROWN DIAMOND REPORT

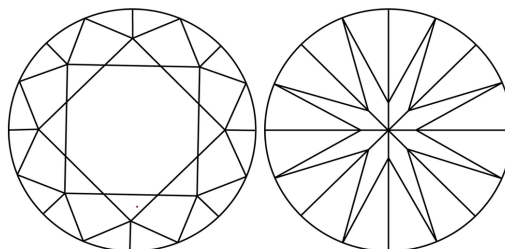
LG652488967
Report verification at lgi.org

PROPORTIONS



Sample Image Used

CLARITY CHARACTERISTICS



KEY TO SYMBOLS

Red symbols indicate internal characteristics.
Green symbols indicate external characteristics.

COLOR

D E F G H I J Faint Very Light Light

CLARITY

IF	VVS ¹⁻²	VS ¹⁻²	SI ¹⁻²	I ¹⁻³
Internally Flawless	Very Very Slightly Included	Very Slightly Included	Slightly Included	Included



© IGI 2020, International Gemological Institute

FD - 10 20

www.igi.org

LABORATORY GROWN DIAMOND REPORT



September 19, 2024

IGI Report Number **LG652488967**Description **LABORATORY GROWN DIAMOND**Shape and Cutting Style **ROUND BRILLIANT**

Measurements 6.73 - 6.79 X 4.08 MM

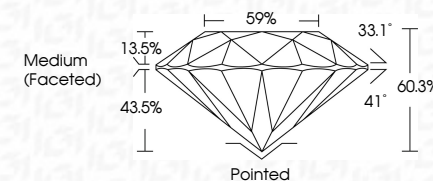
GRADING RESULTS

Carat Weight 1.15 CARAT

Color Grade E

Clarity Grade WS 2

Cut Grade **IDEAL**



ADDITIONAL GRADING INFORMATION

Polish **EXCELLENT**Symmetry **EXCELLENT**Fluorescence **NONE**Inscription(s)  LG652488967

Comments: This Laboratory Grown Diamond was created by Chemical Vapor Deposition (CVD) growth process.
Type IIa



September 19, 2024
GI Report No LG652488967
ROUND BRILLIANT

5.73 - 6.79 X 4.08 MM	1.15 CARAT
Carat Weight	VS 2
Color Grade	IDEAL
Clarity Grade	60.3%
Out Grade	59%
Depth	59%
Table	59%
Girdle	59%
	Medium (Excellent)

	Pointed	EXCELLENT	EXCELLENT	NONE
Culet				
Polish				
Symmetry				
Fluorescence				

Comments:
This Laboratory Grown Diamond was created by Chemical Vapor Deposition (CVD) growth process.