

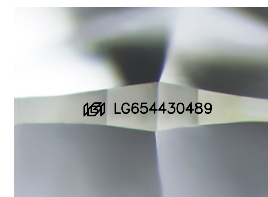
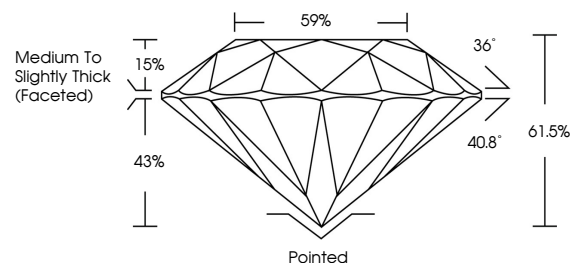


ELECTRONIC COPY

LABORATORY GROWN DIAMOND REPORT

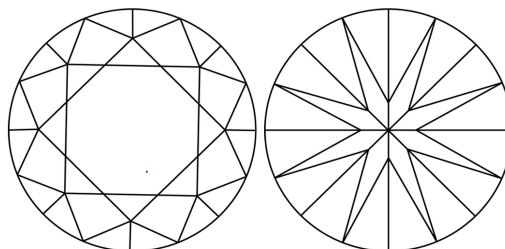
LG654430489
Report verification at lgi.org

PROPORTIONS



Sample Image Used

CLARITY CHARACTERISTICS



KEY TO SYMBOLS

Red symbols indicate internal characteristics.
Green symbols indicate external characteristics.

COLOR

D E F G H I J Faint Very Light Light

CLARITY

IF	VVS ¹⁻²	VS ¹⁻²	SI ¹⁻²	I ¹⁻³
Internally Flawless	Very Very Slightly Included	Very Slightly Included	Slightly Included	Included



© IGI 2020, International Gemological Institute

FD - 10 20

www.igi.org

LABORATORY GROWN DIAMOND REPORT



September 27, 2024

IGI Report Number **LG654430489**Description **LABORATORY GROWN DIAMOND**Shape and Cutting Style **ROUND BRILLIANT**

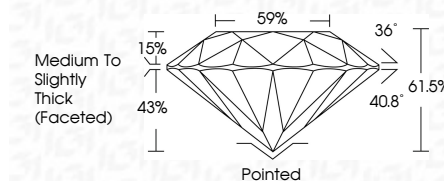
Measurements 6.50 - 6.57 X 4.02 MM

GRADING RESULTS

Carat Weight 1.08 CARAT

Color Grade **E**Clarity Grade WS 2

Cut Grade **IDEAL**



ADDITIONAL GRADING INFORMATION

Polish **EXCELLENT**Symmetry **EXCELLENT**Fluorescence **NONE**Inscription(s) LG654430489

Comments: This Laboratory Grown Diamond was created by Chemical Vapor Deposition (CVD) growth process.
Type IIa



September 27, 2024
GI Report No LG654430489
ROUND BRILLIANT

6.50 - 6.57 X 4.02 MM	1.08 CARAT	
Color	Color Grade	
Clarity	Clarity Grade	VVS 2
Cut	Cut Grade	IDEAL
Depth	Depth	61.05%
Table	Table	59%
Girdle	Girdle	Medium to Slightly Thick (faceted)
Culet	Culet	Pointed
Polish	Polish	EXCELLENT
Symmetry	Symmetry	EXCELLENT
Fluorescence	Fluorescence	NONE
Comments	Comments	see certificate for details

Comments:
This Laboratory Grown Diamond was
created by Chemical Vapor Deposition
(CVD) growth process.