

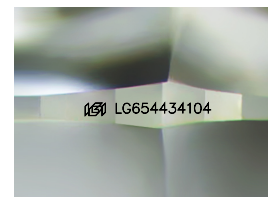
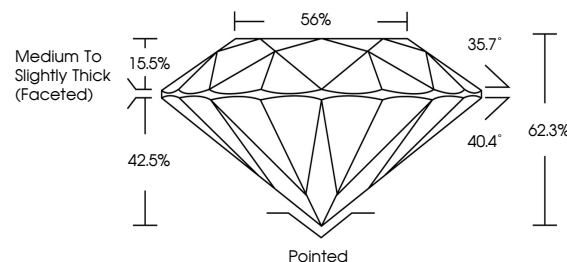


**ELECTRONIC COPY**

## LABORATORY GROWN DIAMOND REPORT

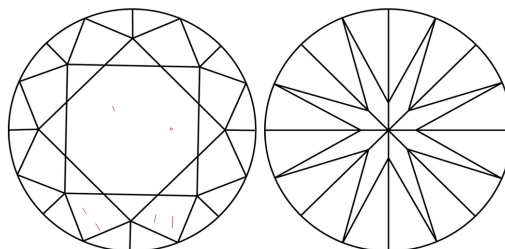
LG654434104  
Report verification at [lgi.org](https://lgi.org)

## PROPORTIONS



Sample Image Used

## CLARITY CHARACTERISTICS



## KEY TO SYMBOLS

Red symbols indicate internal characteristics.  
Green symbols indicate external characteristics.

## COLOR

D E F G H I J Faint Very Light Light

## CLARITY

| IF                  | VS <sup>1,2</sup>           | VS <sup>1,2</sup>      | SI <sup>1,2</sup> | I <sup>1,3</sup> |
|---------------------|-----------------------------|------------------------|-------------------|------------------|
| Internally Flawless | Very Very Slightly Included | Very Slightly Included | Slightly Included | Included         |



© IGI 2020, International Gemological Institute

FD - 10 20

**www.igi.org**

## LABORATORY GROWN DIAMOND REPORT



September 28, 2024

IGI Report Number **LG654434104**Description **LABORATORY GROWN DIAMOND**Shape and Cutting Style **ROUND BRILLIANT**

Measurements 6.49 - 6.53 X 4.06 MM

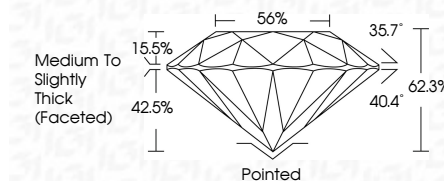
## GRADING RESULTS

Carat Weight 1.08 CARAT

Color Grade

Clarity Grade WS 2

Cut Grade **EXCELLENT**



### ADDITIONAL GRADING INFORMATION

Polish EXCELLENT

Symmetry **EXCELLENT**

Fluorescence NON

Inscription(s)  LG654434104

Comments: As Grown - No indication of post-growth treatment.

This Laboratory Grown Diamond was created by High Pressure High Temperature (HPHT) growth process.

Type II



September 28, 2024  
IGI Report No LG65443  
ROUND BRILLIANT

|              |               |             |       |       |                                    |         |           |          |                  |
|--------------|---------------|-------------|-------|-------|------------------------------------|---------|-----------|----------|------------------|
| 1.08 CARAT E | VVS 2         | EXCELLENT   | 62.9% | 56%   | Medium To Slightly Thick (Faceted) | Pointed | EXCELLENT | NONE     | gem/12454/693704 |
|              | Clarity Grade | Color Grade | Depth | Table | Girdle                             | Culet   | Polish    | Symmetry | Fluorescence     |
|              | CU Grade      |             |       |       |                                    |         |           |          |                  |

**Comments:**  
As Grown - No indication of post-growth treatment.  
This Laboratory Grown Diamond was created by High Pressure High temperature (HPHT) growth process.