



ELECTRONIC COPY

LABORATORY GROWN DIAMOND REPORT

September 24, 2024	
IGI Report Number	LG654470559
Description	LABORATORY GROWN DIAMOND
Shape and Cutting Style	ROUND BRILLIANT
Measurements	6.43 - 6.48 X 3.99 MM

GRADING RESULTS

Carat Weight	1.03 CARAT
Color Grade	D
Clarity Grade	VS 1
Cut Grade	IDEAL

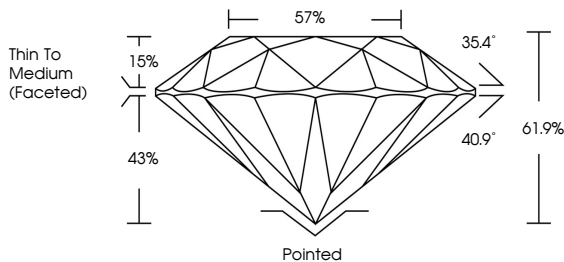
ADDITIONAL GRADING INFORMATION

Polish	EXCELLENT
Symmetry	EXCELLENT
Fluorescence	NONE
Inscription(s)	 LG654470559

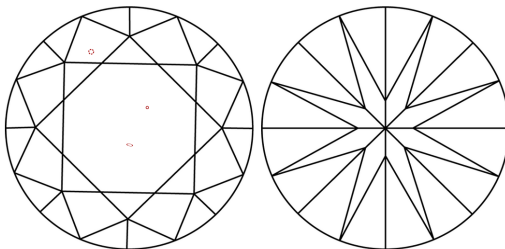
Comments: This Laboratory Grown Diamond was created by Chemical Vapor Deposition (CVD) growth process.
Type IIa

LG654470559
Report verification at igi.org

PROPORTIONS

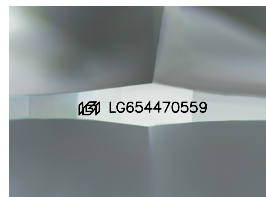


CLARITY CHARACTERISTICS



KEY TO SYMBOLS

Red symbols indicate internal characteristics.
Green symbols indicate external characteristics.



Sample Image Used

COLOR

D E F G H I J Faint Very Light Light

CLARITY

IF	VVS ¹⁻²	VS ¹⁻²	SI ¹⁻²	I ¹⁻³
Internally Flawless	Very Very Slightly Included	Very Slightly Included	Slightly Included	Included



© IGI 2020, International Gemological Institute

FD - 10 20

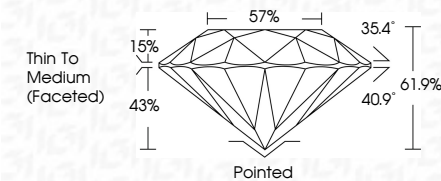
LABORATORY GROWN DIAMOND REPORT



September 24, 2024	
IGI Report Number	LG654470559
Description	LABORATORY GROWN DIAMOND
Shape and Cutting Style	ROUND BRILLIANT
Measurements	6.43 - 6.48 X 3.99 MM

GRADING RESULTS

Carat Weight	1.03 CARAT
Color Grade	D
Clarity Grade	VS 1
Cut Grade	IDEAL



ADDITIONAL GRADING INFORMATION

Polish	EXCELLENT
Symmetry	EXCELLENT
Fluorescence	NONE
Inscription(s)	 LG654470559
<p>Comments: This Laboratory Grown Diamond was created by Chemical Vapor Deposition (CVD) growth process.</p> <p>Type IIa</p>	



September 24, 2024
IGI Report No LG654470559
ROUND BRILLIANT

6.43 - 6.48 X 3.99 MM	1.03 CARAT
Carat Weight	D
Color Grade	VS 1
Clarity Grade	IDEAL
Cut Grade	61.9%
Depth	57%
Table	Thin To Medium (faceted)
Girdle	
Culet	Pointed
Polish	EXCELLENT
Symmetry	EXCELLENT
Fluorescence	NONE
Inscriptions	4861 C4564 MP502

Comments:
This Laboratory Grown Diamond was created by Chemical Vapor Deposition (CVD) growth process.