

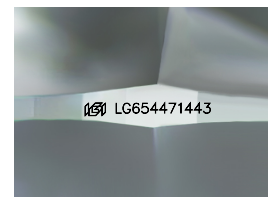
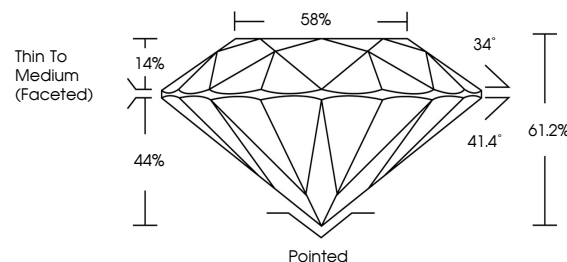


**ELECTRONIC COPY**

## LABORATORY GROWN DIAMOND REPORT

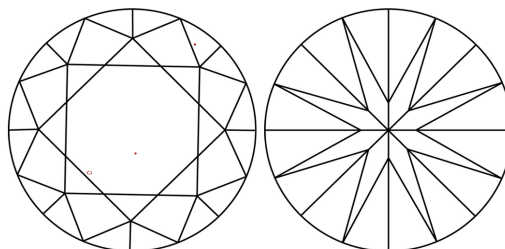
LG654471443  
Report verification at [lgi.org](https://lgi.org)

## PROPORTIONS



Sample Image Used

## CLARITY CHARACTERISTICS



## KEY TO SYMBOLS

Red symbols indicate internal characteristics.  
Green symbols indicate external characteristics.

## COLOR

D E F G H I J Faint Very Light Light

## CLARITY

IF	VVS <sup>1-2</sup>	VS <sup>1-2</sup>	SI <sup>1-2</sup>	I <sup>1-3</sup>
Internally Flawless	Very Very Slightly Included	Very Slightly Included	Slightly Included	Included



© IGI 2020, International Gemological Institute

FD - 10 20

**www.igi.org**

## LABORATORY GROWN DIAMOND REPORT



September 26, 2024

IGI Report Number **LG654471443**Description **LABORATORY GROWN DIAMOND**Shape and Cutting Style **ROUND BRILLIANT**

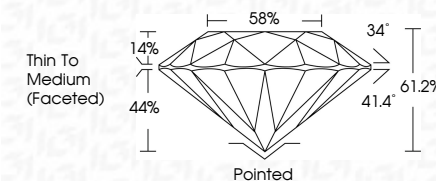
Measurements 8.23 - 8.25 X 5.04 MM

## GRADING RESULTS

Carat Weight **2.08 CARATS**

Color Grade **E**Clarity Grade WS 2

Cut Grade **IDEAL**



### ADDITIONAL GRADING INFORMATION

Polish **EXCELLENT**Symmetry **EXCELLENT**Fluorescence **NONE**Inscription(s)  LG654471443

Comments: This Laboratory Grown Diamond was created by Chemical Vapor Deposition (CVD) growth process.  
Type IIa



September 26, 2024  
IGI Report No LG6544  
ROUND BRILLIANT

<b>6.23 - 6.25 X 5.04 MM</b>		<b>2.08 CARATS</b>	
Carat Weight		VVS 2	
Color Grade		IDEAL	
Cut Grade		61.2%	58%
Depth		Thin To Medium (faceted)	
Table			
Girdle			
Culet			Pointed
Polish			EXCELLENT
Symmetry			EXCELLENT
Fluorescence			NONE
		See Certificate for details	

**Comments:**  
This Laboratory Grown Diamond was created by Chemical Vapor Deposition (CVD) growth process.