

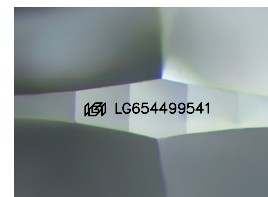
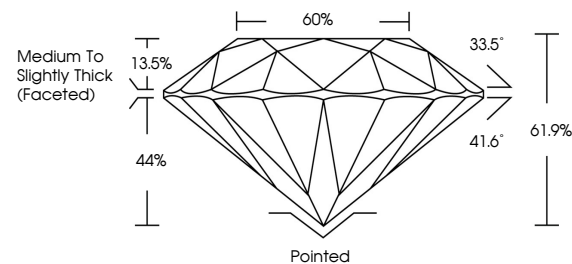


**ELECTRONIC COPY**

## LABORATORY GROWN DIAMOND REPORT

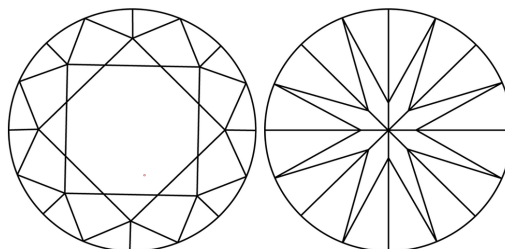
LG654499541  
Report verification at [igi.org](https://igi.org)

## PROPORTIONS



Sample Image Used

## CLARITY CHARACTERISTICS



## KEY TO SYMBOLS

Red symbols indicate internal characteristics.  
Green symbols indicate external characteristics.

## COLOR

D E F G H I J Faint Very Light Light

## CLARITY

IF	VVS <sup>1-2</sup>	VS <sup>1-2</sup>	SI <sup>1-2</sup>	I <sup>1-3</sup>
Internally Flawless	Very Very Slightly Included	Very Slightly Included	Slightly Included	Included



© IGI 2020, International Gemological Institute

FD - 10 20

**www.igi.org**

## LABORATORY GROWN DIAMOND REPORT



September 26, 2024

IGI Report Number **LG654499541**Description **LABORATORY GROWN DIAMOND**Shape and Cutting Style **ROUND BRILLIANT**

Measurements 6.53 - 6.57 X 4.06 MM

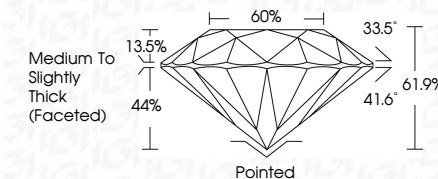
## GRADING RESULTS

Carat Weight 1.08 CARAT

Color Grade D

Clarity Grade VS 1

Cut Grade **IDEAL**



### ADDITIONAL GRADING INFORMATION

Polish **EXCELLENT**Symmetry **EXCELLENT**Fluorescence **NONE**Inscription(s)  LG654499541

Comments: This Laboratory Grown Diamond was created by Chemical Vapor Deposition (CVD) growth process.  
Type IIa



September 26, 2024  
IGI Report No LG654499541  
ROUND BRILLIANT

<b>6.83 - 6.57 X 4.06 MM</b>	<b>1.08 CARAT</b>	<b>D</b>
Carat Weight	VS 1	
Color Grade	IDEAL	
Cut Grade	61.9%	60%
Depth	<b>Medium to Slightly Thick (Faceted)</b>	
Table		
Girdle		
Culet	Poined	
Polish	EXCELLENT	
Symmetry	EXCELLENT	
Fluorescence	NONE	
Inspection(s)	see 104546100241	

**Comments:**  
This Laboratory Grown Diamond was created by Chemical Vapor Deposition (CVD) growth process.