

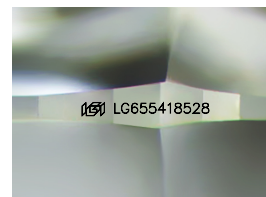
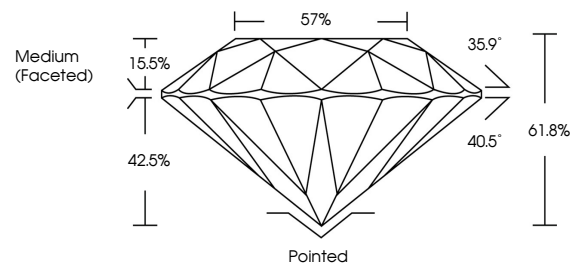


**ELECTRONIC COPY**

## LABORATORY GROWN DIAMOND REPORT

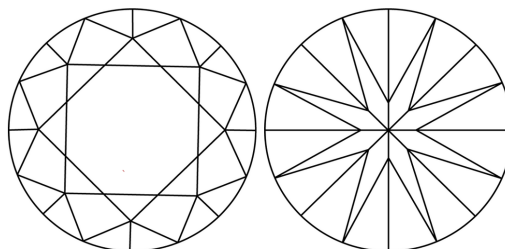
LG655418528  
Report verification at [igi.org](https://igi.org)

## PROPORTIONS



Sample Image Used

## CLARITY CHARACTERISTICS



## KEY TO SYMBOLS

Red symbols indicate internal characteristics.  
Green symbols indicate external characteristics.

## COLOR

D E F G H I J Faint Very Light Light

## CLARITY

IF	VVS <sup>1-2</sup>	VS <sup>1-2</sup>	SI <sup>1-2</sup>	I <sup>1-3</sup>
Internally Flawless	Very Very Slightly Included	Very Slightly Included	Slightly Included	Included



© IGI 2020, International Gemological Institute

FD - 10 20

**www.igi.org**

## LABORATORY GROWN DIAMOND REPORT



October 17, 2024

IGI Report Number **LG655418528**Description **LABORATORY GROWN DIAMOND**Shape and Cutting Style **ROUND BRILLIANT**

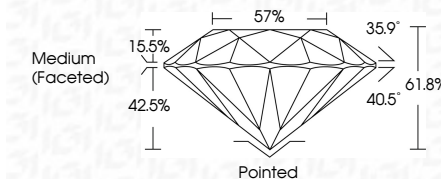
Measurements 8.17 - 8.20 X 5.06 MM

## GRADING RESULTS

Carat Weight 2.09 CARATS

Color Grade **E**Clarity Grade **VS 2**

Cut Grade **IDEAL**



### ADDITIONAL GRADING INFORMATION

Polish **EXCELLENT**Symmetry **EXCELLENT**Fluorescence **NONE**Inscription(s)  LG655418528

Comments: As Grown - No indication of post-growth treatment.

This Laboratory Grown Diamond was created by Chemical Vapor Deposition (CVD) growth process.  
Type IIa



October 17, 2024	2.09 CARATS
GI Report No. LG555418228	
ROUND BRILLIANT	
1.17 - 1.20 X 5.05 MM	
Color Weight	
Color Grade	E
Clarity Grade	VVS 2
Cut Grade	IDEAL
Depth	61.8%
Table	57%
Grainle	Medium (Faceted)
Color	Pointed
Polish	EXCELLENT
Symmetry	EXCELLENT
Fluorescence	NONE
Inscriptions(s)	689 LG555418228
Comments:	
As Grown - No indication of post-growth treatment.	
This Laboratory Grown Diamond was created by Chemical Vapor Deposition (CVD) growth process.	