

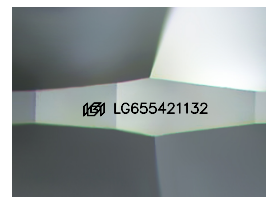
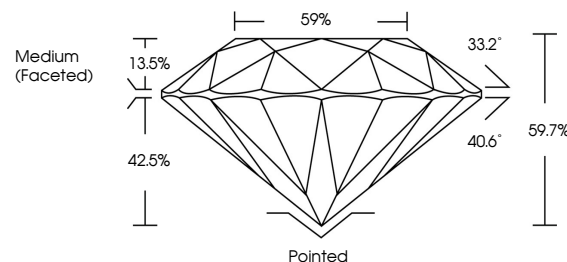


ELECTRONIC COPY

LABORATORY GROWN DIAMOND REPORT

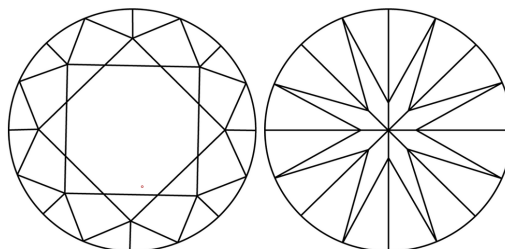
LG655421132
Report verification at lgi.org

PROPORTIONS



Sample Image Used

CLARITY CHARACTERISTICS



KEY TO SYMBOLS

Red symbols indicate internal characteristics.
Green symbols indicate external characteristics.

COLOR

D E F G H I J Faint Very Light Light

CLARITY

IF	VVS ¹⁻²	VS ¹⁻²	SI ¹⁻²	I ¹⁻³
Internally Flawless	Very Very Slightly Included	Very Slightly Included	Slightly Included	Included



© IGI 2020, International Gemological Institute

FD - 10 20

www.igi.org

LABORATORY GROWN DIAMOND REPORT



September 30, 2024

IGI Report Number **LG655421132**Description **LABORATORY GROWN DIAMOND**Shape and Cutting Style **ROUND BRILLIANT**

Measurements 7.39 - 7.44 X 4.43 MM

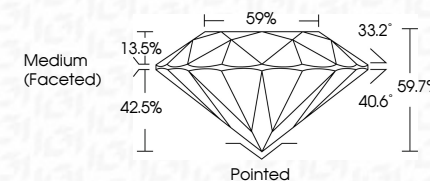
GRADING RESULTS

Carat Weight **1.50 CARAT**

Color Grade E

Clarity Grade **VVS 2**

Cut Grade **IDEAL**



ADDITIONAL GRADING INFORMATION

Polish EXCELLENT

Symmetry **EXCELLENT**Fluorescence **NONE**Inscription(s) LG655421132

Comments: This Laboratory Grown Diamond was created by Chemical Vapor Deposition (CVD) growth process.
Type IIa



September 30, 2024
IGI Report No LG65544
ROUND BRILLIANT

7.39 - 7.44 X 4.43 MM	1.50 CARAT	VVS 2	Pointed
Carat Weight	IDEAL	59.7%	EXCELLENT
Color Grade	59.7%	Medium (Faceted)	NONE
Clarity Grade			EXCELLENT
Depth			FLUORESCENCE
Table			
Girdle			
Culet			
Polish			
Symmetry			
Fluorescence			

Comments:
This Laboratory Grown Diamond was created by Chemical Vapor Deposition (CVD) growth process.