



ELECTRONIC COPY

LABORATORY GROWN DIAMOND REPORT

| | |
|-------------------------|--------------------------|
| October 1, 2024 | |
| IGI Report Number | LG655438241 |
| Description | LABORATORY GROWN DIAMOND |
| Shape and Cutting Style | ROUND BRILLIANT |
| Measurements | 8.09 - 8.16 X 4.93 MM |

GRADING RESULTS

| | |
|---------------|-------------|
| Carat Weight | 2.01 CARATS |
| Color Grade | D |
| Clarity Grade | VS 2 |
| Cut Grade | IDEAL |

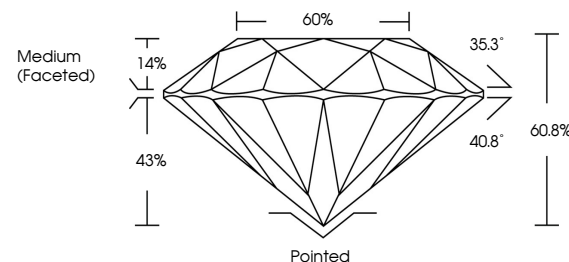
ADDITIONAL GRADING INFORMATION

| | |
|----------------|----------------|
| Polish | EXCELLENT |
| Symmetry | EXCELLENT |
| Fluorescence | NONE |
| Inscription(s) | 15 LG655438241 |

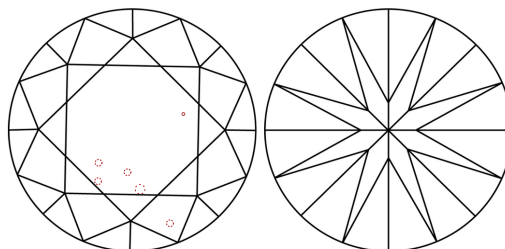
Comments: This Laboratory Grown Diamond was created by Chemical Vapor Deposition (CVD) growth process.
Type IIa

LG655438241
Report verification at [igi.org](https://www.igi.org)

PROPORTIONS

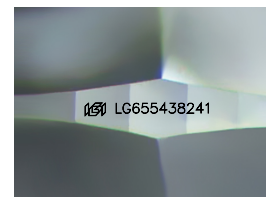


CLARITY CHARACTERISTICS



KEY TO SYMBOLS

Red symbols indicate internal characteristics.
Green symbols indicate external characteristics.



Sample Image Used

COLOR

D E F G H I J Faint Very Light Light

CLARITY

| IF | VVS ¹⁻² | VS ¹⁻² | SI ¹⁻² | I ¹⁻³ |
|---------------------|-----------------------------|------------------------|-------------------|------------------|
| Internally Flawless | Very Very Slightly Included | Very Slightly Included | Slightly Included | Included |



© IGI 2020, International Gemological Institute

FD - 10 20

www.igi.org

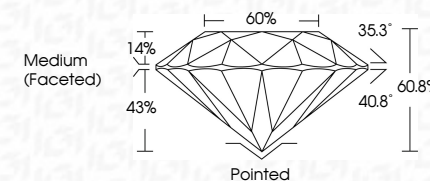
LABORATORY GROWN DIAMOND REPORT



| | |
|-------------------------|--------------------------|
| October 1, 2024 | |
| IGI Report Number | LG655438241 |
| Description | LABORATORY GROWN DIAMOND |
| Shape and Cutting Style | ROUND BRILLIANT |
| Measurements | 8.09 - 8.16 X 4.93 MM |

GRADING RESULTS

| | |
|---------------|-------------|
| Carat Weight | 2.01 CARATS |
| Color Grade | D |
| Clarity Grade | VS 2 |
| Cut Grade | IDEAL |



ADDITIONAL GRADING INFORMATION

| | |
|--|-------------------|
| Polish | EXCELLENT |
| Symmetry | EXCELLENT |
| Fluorescence | NONE |
| Inscription(s) | (GSI) LG655438241 |
| Comments: This Laboratory Grown Diamond was created by Chemical Vapor Deposition (CVD) growth process. | |
| Type IIa | |



| | | | | | | |
|------------------------|-------------------------|-------------|---|-------------------|-----------------|--|
| October 1, 2024 | Q Report No. LG65648241 | 2.01 CARATS | D | Vs 2 | Printed | Comments: The Laboratory Grown Diamond was created by Chemical Vapor Deposition (CVD) growth process. type IIa |
| ROUND BRILLIANT | | | | IDEAL | EXCELLENT | |
| 0.09 - & 1.0 X 4.93 MM | Carat Weight | | | 60.8% | EXCELLENT | |
| | Color Grade | | | 60% | NONE | |
| | Clarity Grade | | | Medium (Fossilco) | lg61 LG65648241 | |
| | Table | | | | | |
| | Depth | | | | | |
| | Girdle | | | | | |
| | Culet | | | | | |
| | Polish | | | | | |
| | Symmetry | | | | | |
| | Fluorescence | | | | | |
| | Inscriptions(s) | | | | | |