



ELECTRONIC COPY

LABORATORY GROWN DIAMOND REPORT

| | |
|-------------------------|--------------------------|
| February 3, 2025 | |
| IGI Report Number | LG656488923 |
| Description | LABORATORY GROWN DIAMOND |
| Shape and Cutting Style | ROUND BRILLIANT |
| Measurements | 7.46 - 7.49 X 4.37 MM |

GRADING RESULTS

| | |
|---------------|------------|
| Carat Weight | 1.47 CARAT |
| Color Grade | D |
| Clarity Grade | VS 2 |
| Cut Grade | EXCELLENT |

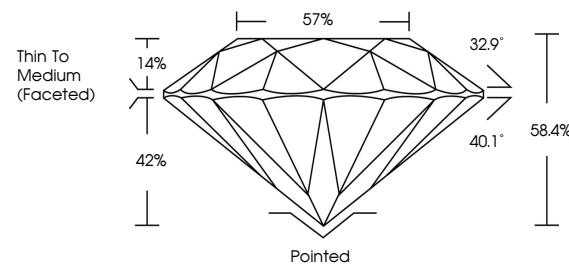
ADDITIONAL GRADING INFORMATION

| | |
|----------------|----------------|
| Polish | EXCELLENT |
| Symmetry | EXCELLENT |
| Fluorescence | NONE |
| Inscription(s) | 15 LG656488923 |

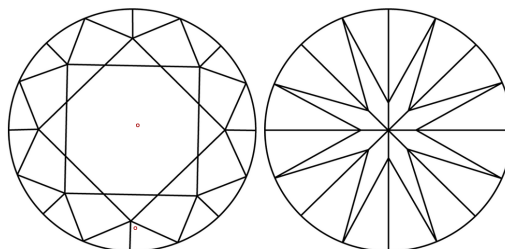
Comments: This Laboratory Grown Diamond was created by Chemical Vapor Deposition (CVD) growth process.
Type IIa

LG656488923
Report verification at igi.org

PROPORTIONS

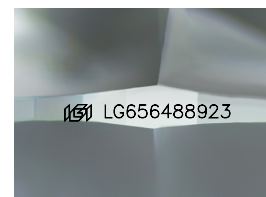


CLARITY CHARACTERISTICS



KEY TO SYMBOLS

Red symbols indicate internal characteristics.
Green symbols indicate external characteristics.



Sample Image Used

COLOR

D E F G H I J Faint Very Light Light

CLARITY

IF VWS¹⁻² VS¹⁻² SI¹⁻² I¹⁻³

| | | | | |
|------------------------|--------------------------------|---------------------------|----------------------|----------|
| Internally Flawless | Very Very Slightly Included | Very Slightly Included | Slightly Included | Included |
|------------------------|--------------------------------|---------------------------|----------------------|----------|

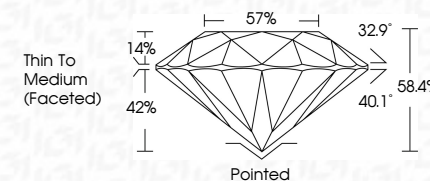
LABORATORY GROWN DIAMOND REPORT



| | |
|-------------------------|--------------------------|
| February 3, 2025 | |
| IGI Report Number | LG656488923 |
| Description | LABORATORY GROWN DIAMOND |
| Shape and Cutting Style | ROUND BRILLIANT |
| Measurements | 7.46 - 7.49 X 4.37 MM |

GRADING RESULTS

| | |
|---------------|------------|
| Carat Weight | 1.47 CARAT |
| Color Grade | D |
| Clarity Grade | VS 2 |
| Cut Grade | EXCELLENT |



ADDITIONAL GRADING INFORMATION

| | |
|---|-----------------------------|
| Polish | EXCELLENT |
| Symmetry | EXCELLENT |
| Fluorescence | NONE |
| Inscription(s) | 1631 LG656488923 |
| <p>Comments: This Laboratory Grown Diamond was created by Chemical Vapor Deposition (CVD) growth process.</p> <p>Type IIa</p> | |



© IGI 2020, International Gemological Institute

FD - 10 20



THIS DOCUMENT WAS PRODUCED WITH THE FOLLOWING SECURITY MEASURES: SPECIAL DOCUMENT PAPER, INK SCREENS, WATERMARK, BACKGROUND DESIGNS, HOLOGRAM AND OTHER SECURITY FEATURES NOT LISTED AND DO EXCEED DOCUMENT SECURITY INDUSTRY GUIDELINE

www.igi.org

| | |
|---------------------------|------------------|
| February 3, 2025 | 1.47 CARAT |
| GL Report No. LG565489223 | D |
| ROUND BRILLIANT | VS 2 |
| | EXCELLENT |
| | 58.4% |
| | 57% |
| | Thin To Medium |
| | (Faceted) |
| | Polished |
| | EXCELLENT |
| | EXCELLENT |
| | NONE |
| | 1691 LG565489223 |

Comments:
 This is a Heavy Crown Diamond was
 identified by Chemical Vapor Deposition
 (CVD) growth process.
 Type IIA