

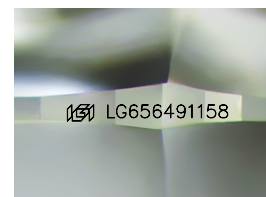
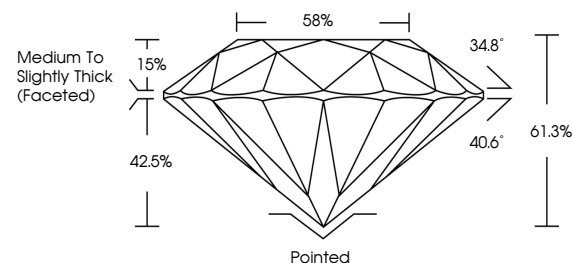


**ELECTRONIC COPY**

## LABORATORY GROWN DIAMOND REPORT

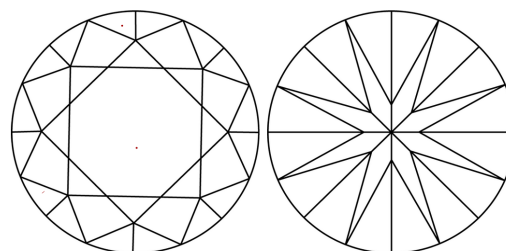
LG656491158  
Report verification at [igi.org](https://igi.org)

## PROPORTIONS



Sample Image Used

## CLARITY CHARACTERISTICS



## KEY TO SYMBOLS

Red symbols indicate internal characteristics.  
Green symbols indicate external characteristics.

## COLOR

D E F G H I J Faint Very Light Light

## CLARITY

IF WS<sup>1-2</sup> VS<sup>1-2</sup> SI<sup>1-2</sup> |<sup>1-3</sup>

|                        |                                |                           |                      |          |
|------------------------|--------------------------------|---------------------------|----------------------|----------|
| Internally<br>Flawless | Very Very<br>Slightly Included | Very<br>Slightly Included | Slightly<br>Included | Included |
|------------------------|--------------------------------|---------------------------|----------------------|----------|

## LABORATORY GROWN DIAMOND REPORT



March 27, 2025

IGI Report Number **LG656491158**Description **LABORATORY GROWN DIAMOND**Shape and Cutting Style **ROUND BRILLIANT**

Measurements 10.19 - 10.27 X 6.27 MM

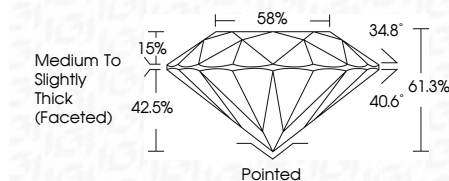
## GRADING RESULTS

Carat Weight **4.05 CARATS**

| Color Grade | F |
|-------------|---|
|-------------|---|

Clarity Grade VVS 2

Cut Grade **IDEAL**



### ADDITIONAL GRADING INFORMATION

Polish **EXCELLENT**Symmetry **EXCELLENT**Fluorescence **NONE**Inscription(s)  LG656491158

Comments: This Laboratory Grown Diamond was created by Chemical Vapor Deposition (CVD) growth process.

Type IIa



|                          |                                    |   |
|--------------------------|------------------------------------|---|
| March 27, 2025           | Carat Weight                       | 4.05 CARATS   |
| GI Report No LG566491158 | Color Grade                        | F   |
| ROUND BRILLIANT          | Clarity Grade                      | VVS 2   |
|                          | Cut Grade                          | IDEAL   |
|                          | Depth                              | 61.3%   |
|                          | Table                              | 59%   |
| 10.19 - 10.27 X 6.27 MM  | Medium To Slightly Thick (rounded) |   |
|                          | Curlet                             | Pointed   |
|                          | Polish                             | EXCELLENT   |
|                          | Symmetry                           | EXCELLENT   |
|                          | Fluorescence                       | NONE  |
|                          | Inscriptions(s)                    | 169 LG566491158   |
|                          | Comments:                          |   |
|                          |                                    | The Laboratory Grown Diamond was created by Chemical Vapor Deposition (CVD) growth process. |
|                          |                                    | Type IIA  |



THIS DOCUMENT WAS PRODUCED WITH THE FOLLOWING SECURITY MEASURES: SPECIAL DOCUMENT PAPER, INK SCREENS, WATERMARK, BACKGROUND DESIGNS, HOLOGRAM AND OTHER SECURITY FEATURES NOT LISTED AND DO EXCEED DOCUMENT SECURITY INDUSTRY GUIDELINES