



ELECTRONIC COPY

LABORATORY GROWN DIAMOND REPORT

LG657425487
Report verification at igi.org

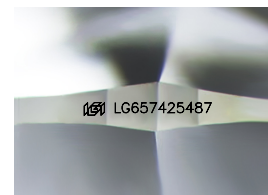
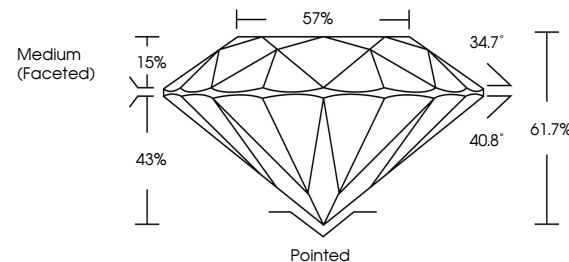
October 9, 2024	
IGI Report Number	LG657425487
Description	LABORATORY GROWN DIAMOND
Shape and Cutting Style	ROUND BRILLIANT
Measurements	8.68 - 8.72 X 5.37 MM
GRADING RESULTS	
Carat Weight	2.51 CARATS
Color Grade	E
Clarity Grade	VVS 1
Cut Grade	IDEAL

ADDITIONAL GRADING INFORMATION

Polish	EXCELLENT
Symmetry	EXCELLENT
Fluorescence	NONE
Inscription(s)	151 LG657425487

Comments: As Grown - No indication of post-growth treatment.
This Laboratory Grown Diamond was created by High Pressure High Temperature (HPHT) growth process.
Type II

PROPORTIONS



Sample Image Used

COLOR

D E F G H I J Faint Very Light Light

CLARITY

IF	VVS ¹⁻²	VS ¹⁻²	SI ¹⁻²	I ¹⁻³
Internally Flawless	Very Very Slightly Included	Very Slightly Included	Slightly Included	Included



© IGI 2020, International Gemological Institute

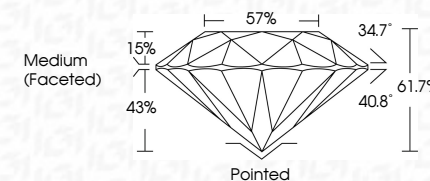
FD - 10 20

www.igi.org

LABORATORY GROWN DIAMOND REPORT



Date	October 9, 2024
IGI Report Number	LG657425487
Description	LABORATORY GROWN DIAMOND
Shape and Cutting Style	ROUND BRILLIANT
Measurements	8.68 - 8.72 X 5.37 MM
GRADING RESULTS	
Carat Weight	2.51 CARATS
Color Grade	E
Clarity Grade	VVS 1
Cut Grade	IDEAL



ADDITIONAL GRADING INFORMATION

Polish	EXCELLENT
Symmetry	EXCELLENT
Fluorescence	NONE
Inscription(s)	(G) LG657425487
Comments: As Grown - No indication of post-growth treatment.	
This Laboratory Grown Diamond was created by High Pressure High Temperature (HPHT) growth process.	
Type II	



October 9, 2024
GI Report No LG657425487
ROUND BRILLIANT

Color	6.68 - 8.72 X 5.37 MM	2.51 CARATS
Carat Weight		
Color Grade		
Clarity Grade		VVS 1
Cut Grade		IDEAL
Depth		61.7%
Table		57%
Grade		Medium (Faceted)
Culet		Pointed
Polish		EXCELLENT
Symmetry		EXCELLENT
Fluorescence		NONE
Identification		gem/12457/05482

Comments:
As Grown - No indication of post-growth treatment.
This Laboratory Grown Diamond was created by High Pressure High Temperature (HPHT) growth process.