



**ELECTRONIC COPY**

## LABORATORY GROWN DIAMOND REPORT

October 9, 2024	
IGI Report Number	LG657460753
Description	LABORATORY GROWN DIAMOND
Shape and Cutting Style	ROUND BRILLIANT
Measurements	7.38 - 7.42 X 4.57 MM

## GRADING RESULTS

Carat Weight	1.54 CARAT
Color Grade	D
Clarity Grade	VVS 1
Cut Grade	IDEAL

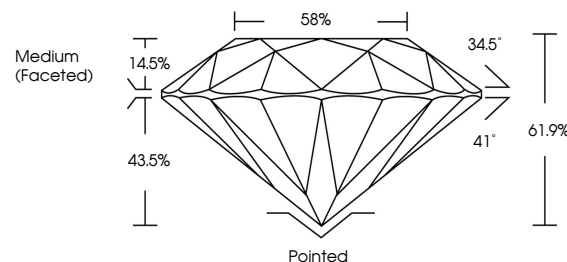
### ADDITIONAL GRADING INFORMATION

Polish	EXCELLENT
Symmetry	EXCELLENT
Fluorescence	NONE
Inscription(s)	151 LG657460753

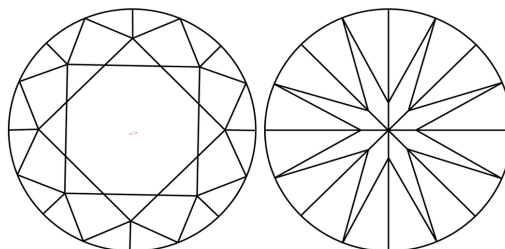
Comments: This Laboratory Grown Diamond was created by Chemical Vapor Deposition (CVD) growth process.  
Type IIa

LG657460753  
Report verification at lqi.org

## PROPORTIONS

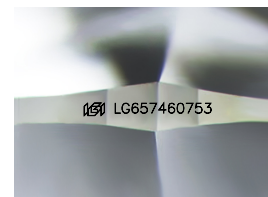


## CLARITY CHARACTERISTICS



### KEY TO SYMBOLS

Red symbols indicate internal characteristics.  
Green symbols indicate external characteristics.



Sample Image Used

**COLOR**

D E F G H I J Faint Very Light Light

## CLARITY

IF	VVS <sup>1,2</sup>	VS <sup>1,2</sup>	SI <sup>1,2</sup>	I <sup>1,3</sup>
Internally Flawless	Very Very Slightly Included	Very Slightly Included	Slightly Included	Included



© IGI 2020, International Gemmological Institute

FD - 10 20

**www.igi.org**

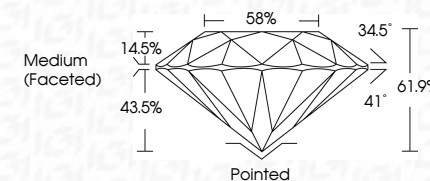
## LABORATORY GROWN DIAMOND REPORT



October 9, 2024	
IGI Report Number	LG657460753
Description	LABORATORY GROWN DIAMOND
Shape and Cutting Style	ROUND BRILLIANT
Measurements	7.38 - 7.42 X 4.57 MM

## GRADING RESULTS

Carat Weight	1.54 CARAT
Color Grade	D
Clarity Grade	VVS 1
Cut Grade	IDEAL



### ADDITIONAL GRADING INFORMATION

Polish	EXCELLENT
Symmetry	EXCELLENT
Fluorescence	NONE
Inscription(s)	 LG6657460753
<p>Comments: This Laboratory Grown Diamond was created by Chemical Vapor Deposition (CVD) growth process.</p> <p>Type IIa</p>	



IG

October 9, 2024  
GI Report No LG657460753  
ROUND BRILLIANT

7.38 - 7.42 X 4.57 MM	1.54 CARAT	D
Carat Weight	VVS 1	Pointed
Color Grade	IDEAL	EXCELLENT
Clarity Grade	61.5%	EXCELLENT
Cut Grade	58%	NONE
Depth	Medium (Faceted)	
Table		
Grade		
Culet		
Polish		
Symmetry		
Fluorescence		

**Comments:**  
This Laboratory Grown Diamond was created by Chemical Vapor Deposition (CVD) growth process.