



ELECTRONIC COPY

LABORATORY GROWN DIAMOND REPORT

LG658485085
Report verification at igi.org

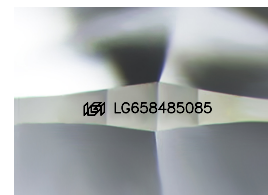
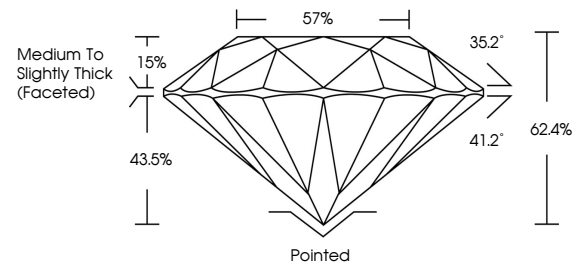
October 10, 2024	
IGI Report Number	LG658485085
Description	LABORATORY GROWN DIAMOND
Shape and Cutting Style	ROUND BRILLIANT
Measurements	8.06 - 8.09 X 5.04 MM
GRADING RESULTS	
Carat Weight	2.02 CARATS
Color Grade	D
Clarity Grade	VS 1
Cut Grade	IDEAL

ADDITIONAL GRADING INFORMATION

Polish	EXCELLENT
Symmetry	EXCELLENT
Fluorescence	NONE
Inscription(s)	 LG658485085

Comments: As Grown - No indication of post-growth treatment.
This Laboratory Grown Diamond was created by High Pressure High Temperature (HPHT) growth process.
Type II

PROPORTIONS



Sample Image Used

COLOR

D E F G H I J Faint Very Light Light

CLARITY

IF	VVS ¹⁻²	VS ¹⁻²	SI ¹⁻²	I ¹⁻³
Internally Flawless	Very Very Slightly Included	Very Slightly Included	Slightly Included	Included



© IGI 2020, International Gemological Institute

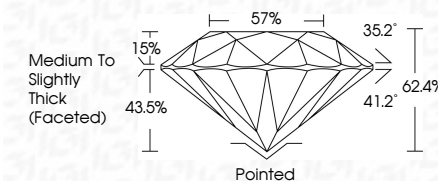
FD - 10 20

www.igi.org

LABORATORY GROWN DIAMOND REPORT



October 10, 2024	
IGI Report Number	LG658485085
Description	LABORATORY GROWN DIAMOND
Shape and Cutting Style	ROUND BRILLIANT
Measurements	8.06 - 8.09 X 5.04 MM
GRADING RESULTS	
Carat Weight	2.02 CARATS
Color Grade	D
Clarity Grade	VS 1
Cut Grade	IDEAL



ADDITIONAL GRADING INFORMATION

Polish	EXCELLENT
Symmetry	EXCELLENT
Fluorescence	NONE
Inscription(s)	 LG658485085
Comments: As Grown - No indication of post-growth treatment.	
This Laboratory Grown Diamond was created by High Pressure High Temperature (HPHT) growth process.	
Type II	



October 10, 2024	
IGI Report No. LG56848095	
ROUND - BULG	2.02 CARATS
10.00 - 9.00 X 5.04 MM	
Carat Weight	D
Color Grade	Vs 1
Clarity Grade	IDEAL
Cut Grade	62.4%
Depth	57%
Table	Medium to slightly thick (checked)
Girdle	Pointed
Culet	EXCELLENT
Polish	EXCELLENT
Symmetry	EXCELLENT
Fluorescence	NONE
Inscription(s)	689 LG56848095
<p>Comments: As Grown - No indication of post-growth treatment.</p> <p>The Laboratory Grown Diamond was created by High Pressure High Temperature (HPHT) growth process.</p> <p>Note: This diamond is not suitable for jewelry.</p>	