

ELECTRONIC COPY

LABORATORY GROWN DIAMOND REPORT

| | |
|-------------------------|--------------------------|
| October 12, 2024 | |
| IGI Report Number | LG659440808 |
| Description | LABORATORY GROWN DIAMOND |
| Shape and Cutting Style | ROUND BRILLIANT |
| Measurements | 7.87 - 7.92 X 4.83 MM |

GRADING RESULTS

| | |
|---------------|------------|
| Carat Weight | 1.84 CARAT |
| Color Grade | D |
| Clarity Grade | VVS 1 |
| Cut Grade | IDEAL |

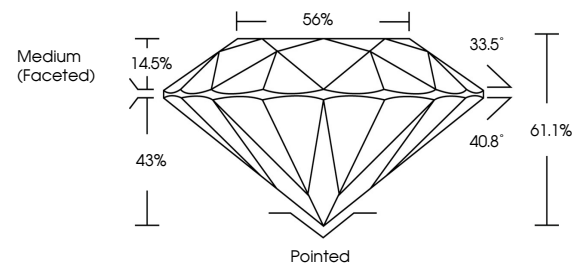
ADDITIONAL GRADING INFORMATION

| | |
|----------------|---|
| Polish | EXCELLENT |
| Symmetry | EXCELLENT |
| Fluorescence | NONE |
| Inscription(s) |  LG659440808 |

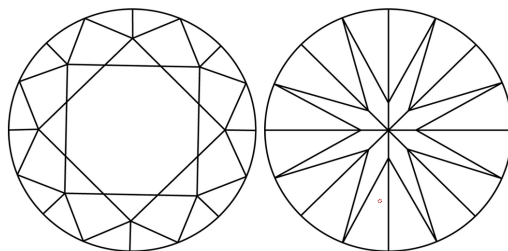
Comments: As Grown - No indication of post-growth treatment.
This Laboratory Grown Diamond was created by High Pressure High Temperature (HPHT) growth process.
Type II

LG659440808
Report verification at igi.org

PROPORTIONS

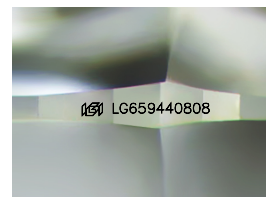


CLARITY CHARACTERISTICS



KEY TO SYMBOLS

Red symbols indicate internal characteristics.
Green symbols indicate external characteristics.



Sample Image Used

COLOR

D E F G H I J Faint Very Light Light

CLARITY

| IF | VVS ¹⁻² | VS ¹⁻² | SI ¹⁻² | I ¹⁻³ |
|---------------------|-----------------------------|------------------------|-------------------|------------------|
| Internally Flawless | Very Very Slightly Included | Very Slightly Included | Slightly Included | Included |



© IGI 2020, International Gemological Institute

FD - 10 20

www.igi.org

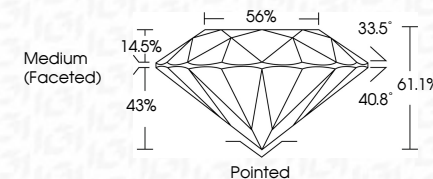
LABORATORY GROWN DIAMOND REPORT



| | |
|-------------------------|--------------------------|
| October 12, 2024 | |
| IGI Report Number | LG659440808 |
| Description | LABORATORY GROWN DIAMOND |
| Shape and Cutting Style | ROUND BRILLIANT |
| Measurements | 7.87 - 7.92 X 4.83 MM |

GRADING RESULTS

| | |
|---------------|------------|
| Carat Weight | 1.84 CARAT |
| Color Grade | D |
| Clarity Grade | VVS 1 |
| Cut Grade | IDEAL |



ADDITIONAL GRADING INFORMATION

| | |
|--|----------------------------|
| Polish | EXCELLENT |
| Symmetry | EXCELLENT |
| Fluorescence | NONE |
| Inscription(s) | (G) LG659440808 |
| Comments: As Grown - No indication of post-growth treatment. | |
| This Laboratory Grown Diamond was created by High Pressure High Temperature (HPHT) growth process. | |
| Type II | |



| | | | |
|-----------------------|--|---|--|
| October 12, 2024 | | IGI Report No. IGS459408 | |
| ROUND BRILLIANT | | 1.84 CARAT | |
| 7.87 - 7.92 X 4.83 MM | | D | |
| Color Grade | | VVS 1 | |
| Clarity Grade | | IDEAL | |
| Cut Grade | | 6.11% | |
| Depth | | 56% | |
| Table | | Medium (Faceted) | |
| Girdle | | Pointed | |
| Culet | | EXCELLENT | |
| Polish | | EXCELLENT | |
| Symmetry | | NONE | |
| Fluorescence | | /691 LG55940808 | |
| Inscriptions(s) | | | |
| Comments: | | No indication of post-growth treatment. | |
| | | This Laboratory Growth Diamond was created by High Pressure High Temperature (HPHT) growth process. | |
| | | Type II | |