

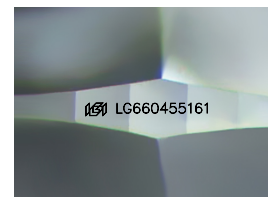
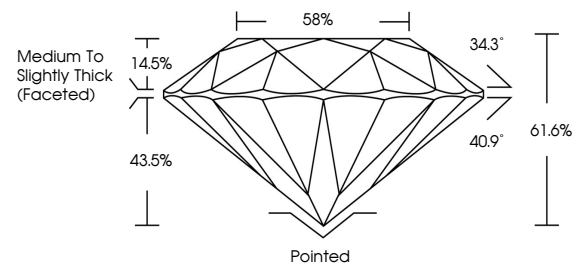


ELECTRONIC COPY

LABORATORY GROWN DIAMOND REPORT

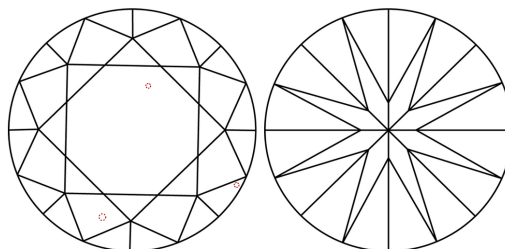
LG660455161
Report verification at igi.org

PROPORTIONS



Sample Image Used

CLARITY CHARACTERISTICS



KEY TO SYMBOLS

Red symbols indicate internal characteristics.
Green symbols indicate external characteristics.

COLOR

D E F G H I J Faint Very Light Light

CLARITY

IF	VVS ¹⁻²	VS ¹⁻²	SI ¹⁻²	I ¹⁻³
Internally Flawless	Very Very Slightly Included	Very Slightly Included	Slightly Included	Included



© IGI 2020, International Gemological Institute

FD - 10 20

www.igi.org

LABORATORY GROWN DIAMOND REPORT



October 18, 2024

IGI Report Number **LG660455161**Description **LABORATORY GROWN DIAMOND**Shape and Cutting Style **ROUND BRILLIANT**

Measurements 8.93 - 8.99 X 5.53 MM

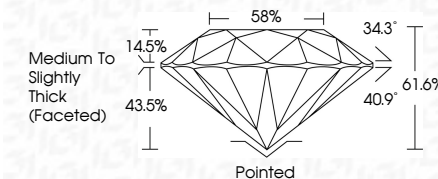
GRADING RESULTS

Carat Weight **2.77 CARATS**

Color Grade E

Clarity Grade VS 1

Cut Grade **IDEAL**



ADDITIONAL GRADING INFORMATION

Polish **EXCELLENT**Symmetry **EXCELLENT**Fluorescence **NONE**Inscription(s) LG660455161

Comments: This Laboratory Grown Diamond was created by Chemical Vapor Deposition (CVD) growth process.
Type IIa



October 18, 2024	G Report No LG604065161	
ROUND BRILLIANT	2.77 CARATS	
VS1	E	
IDEAL	61.05%	
58%	Medium to slightly Thick Faceted	
Polished	Excellent	
Excellent	None	
1691 LG604065161		
Comments:		
The Laboratory Grown Diamond was Vapor Deposition (VD) growth process.		
Type IIG		