



ELECTRONIC COPY

LG660455990
Report verification at igi.org



November 28, 2024
IGI Report Number **LG660455990**
Description **LABORATORY GROWN DIAMOND**
Shape and Cutting Style **CUT CORNERED
RECTANGULAR MODIFIED
BRILLIANT**
Measurements **7.45 X 4.98 X 3.26 MM**
GRADING RESULTS
Carat Weight **1.05 CARAT**
Color Grade **FANCY YELLOWISH GREEN**
Clarity Grade **VVS 2**
Cut Grade **VERY GOOD**

LABORATORY GROWN DIAMOND REPORT

November 28, 2024
IGI Report Number **LG660455990**
Description **LABORATORY GROWN DIAMOND**
Shape and Cutting Style **CUT CORNERED RECTANGULAR
MODIFIED BRILLIANT**
Measurements **7.45 X 4.98 X 3.26 MM**

GRADING RESULTS

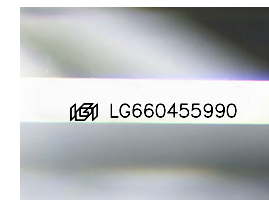
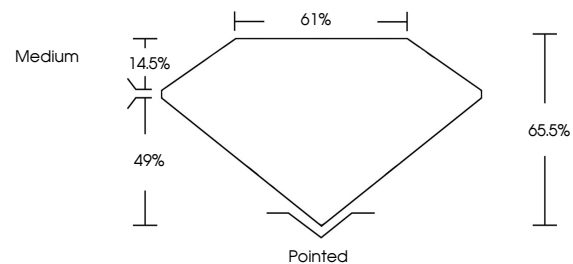
Carat Weight **1.05 CARAT**
Color Grade **FANCY YELLOWISH GREEN**
Clarity Grade **VVS 2**
Cut Grade **VERY GOOD**

ADDITIONAL GRADING INFORMATION

Polish **EXCELLENT**
Symmetry **EXCELLENT**
Fluorescence **SLIGHT**
Inscription(s) **IGI LG660455990**

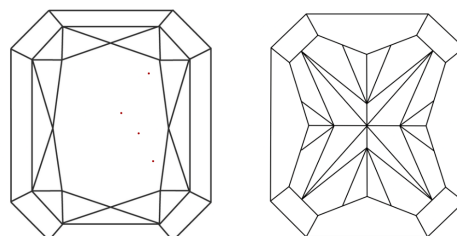
Comments: This Laboratory Grown Diamond was created by High Pressure High Temperature (HPHT) growth process.

PROPORTIONS



Sample Image Used

CLARITY CHARACTERISTICS



KEY TO SYMBOLS

Red symbols indicate internal characteristics.
Green symbols indicate external characteristics.

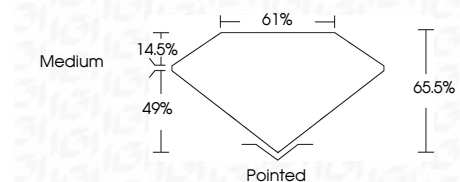
COLOR

D E F G H I J Faint Very Light Light

CLARITY

IF VS¹⁻² VS¹⁻² SI¹⁻² I¹⁻³

Internally Flawless Very Very Slightly Included Very Slightly Included Slightly Included Included



ADDITIONAL GRADING INFORMATION

Polish **EXCELLENT**
Symmetry **EXCELLENT**
Fluorescence **SLIGHT**
Inscription(s) **IGI LG660455990**
Comments: This Laboratory Grown Diamond was created by High Pressure High Temperature (HPHT) growth process.



November 28, 2024
IGI Report No LG660455990
CUT CORNERED RECT. MODIFIED BRILLIANT
7.45 X 4.98 X 3.26 MM
1.05 CARAT
FANCY YELLOWISH GREEN
VVS 2
VERY GOOD
66.05%
61%
Medium
Pointed
EXCELLENT
EXCELLENT
SLIGHT
IGI LG660455990
Comments: This Laboratory Grown Diamond was created by High Pressure High Temperature (HPHT) growth process.