

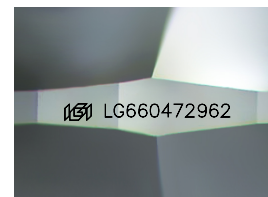
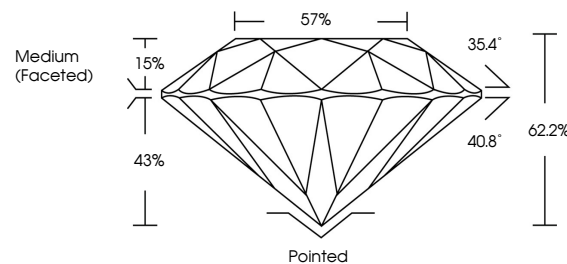


ELECTRONIC COPY

LABORATORY GROWN DIAMOND REPORT

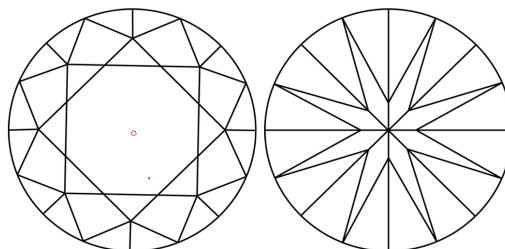
LG660472962
Report verification at igi.org

PROPORTIONS



Sample Image Used

CLARITY CHARACTERISTICS



KEY TO SYMBOLS

Red symbols indicate internal characteristics.
Green symbols indicate external characteristics.



www.igi.org

COLOR

D E F G H I J Faint Very Light Light

CLARITY

IF WS¹⁻² VS¹⁻² SI¹⁻² |¹⁻³

Internally Flawless	Very Very Slightly Included	Very Slightly Included	Slightly Included	Included
------------------------	--------------------------------	---------------------------	----------------------	----------



© IGI 2020, International Gemological Institute

FD - 10 20

THIS DOCUMENT WAS PRODUCED WITH THE FOLLOWING SECURITY MEASURES: SPECIAL DOCUMENT PAPER, INK SCREENS, WATERMARK, BACKGROUND DESIGNS, HOLOGRAM AND OTHER SECURITY FEATURES NOT LISTED AND DO EXCEED DOCUMENT SECURITY INDUSTRY GUIDELINES

LABORATORY GROWN DIAMOND REPORT



October 24, 2024

IGI Report Number **LG660472962**Description **LABORATORY GROWN DIAMOND**Shape and Cutting Style **ROUND BRILLIANT**

Measurements 8.77 - 8.83 X 5.48 MM

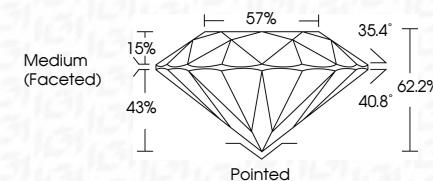
GRADING RESULTS

Carat Weight **2.63 CARATS**

Color Grade D

Clarity Grade **VS 1**

Cut Grade **IDEAL**



ADDITIONAL GRADING INFORMATION

Polish **EXCELLENT**Symmetry **EXCELLENT**Fluorescence **NONE**Inscription(s) LG660472962

Comments: HEARTS & ARROWS

As Grown - No indication of post-growth treatment.

This Laboratory Grown Diamond was created by High Pressure High Temperature (HPHT) growth process.

Type II



IG

October 24, 2024	G Report No LG6607262
ROUND BRILLIANT	
Weight - 6.83 X 5.48 MM	2.63 CARATS
Carat Weight	D
Color Grade	VVS 1
Clarity Grade	IDEAL
Cut Grade	62/2%
Depth	57%
Table	
Girdle	Medium (Faceted)
Culet	Poished
Polish	EXCELLENT
Symmetry	EXCELLENT
Fluorescence	NONE
Inscriptions	#69 LG6607262
Comments:	
- HEART & ARROW	
- NO indication of post-growth treatment.	
This Laboratory Growth Diamond was created by High Pressure High Temperature (HPHT) growth process.	