

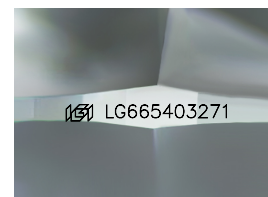
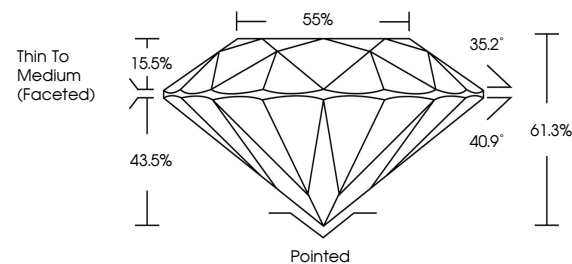


ELECTRONIC COPY

LABORATORY GROWN DIAMOND REPORT

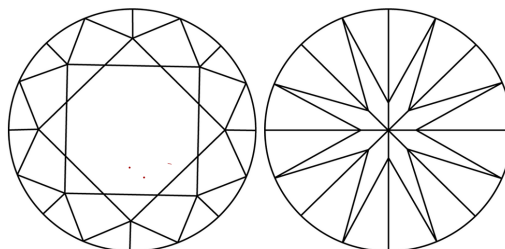
LG665403271
Report verification at igi.org

PROPORTIONS



Sample Image Used

CLARITY CHARACTERISTICS



KEY TO SYMBOLS

Red symbols indicate internal characteristics.
Green symbols indicate external characteristics.

COLOR

D E F G H I J Faint Very Light Light

CLARITY

IF WS¹⁻² VS¹⁻² SI¹⁻² |¹⁻³

Internally Flawless	Very Very Slightly Included	Very Slightly Included	Slightly Included	Included
------------------------	--------------------------------	---------------------------	----------------------	----------



January 23, 2025

IGI Report Number LG665403271

Description **LABORATORY GROWN DIAMOND**Shape and Cutting Style **ROUND BRILLIANT**

Measurements 8.80 - 8.87 X 5.42 MM

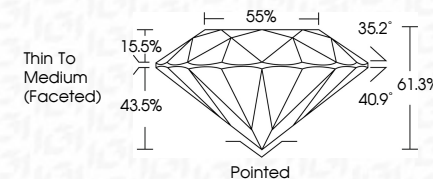
GRADING RESULTS

Carat Weight **2.53 CARATS**

Color Grade H

Clarity Grade WS 2

Cut Grade **IDEAL**



ADDITIONAL GRADING INFORMATION

Polish EXCELLENT

Symmetry **EXCELLENT**Fluorescence NONEInscription(s) LG665403271

Comments: This Laboratory Grown Diamond was created by Chemical Vapor Deposition (CVD) growth process.
Type IIa



© IGI 2020, International Gemological Institute

FD - 10 20

www.igi.org

THIS DOCUMENT WAS PRODUCED WITH THE FOLLOWING SECURITY MEASURES: SPECIAL DOCUMENT PAPER, INK SCREENS, WATERMARK BACKGROUND DESIGNS, HOLOGRAM AND OTHER SECURITY FEATURES NOT LISTED AND DO EXCEED DOCUMENT SECURITY INDUSTRY GUIDELINES

January 23, 2025
IGI Report No LG665403271
ROUND BRILLIANT

8.90 - 8.97 X 5.42 MM		Carat Weight	2.53 CARATS
		Color Grade	H
		Clarity Grade	VVS 2
		Cut Grade	IDEAL
		Depth	61.9%
		Table	56%
		Girdle	Thin To Medium (faced)
		Culet	Pointed
		Polish	EXCELLENT
		Symmetry	EXCELLENT
		Fluorescence	NONE
		Reference	gem/1245450273

Comments:
This Laboratory Grown Diamond was created by Chemical Vapor Deposition (CVD) growth process.