

November 25, 2024

IGI Report Number

LG665431364

Description

LABORATORY GROWN DIAMOND

Shape and Cutting Style

ROUND BRILLIANT

Measurements

7.82 - 7.86 x 4.80 mm

GRADING RESULTS

Carat Weight

1.82 CARAT

Color Grade

E

Clarity Grade

VVS 2

Cut Grade

IDEAL

ADDITIONAL GRADING INFORMATION

Polish

EXCELLENT


Symmetry

EXCELLENT

Fluorescence

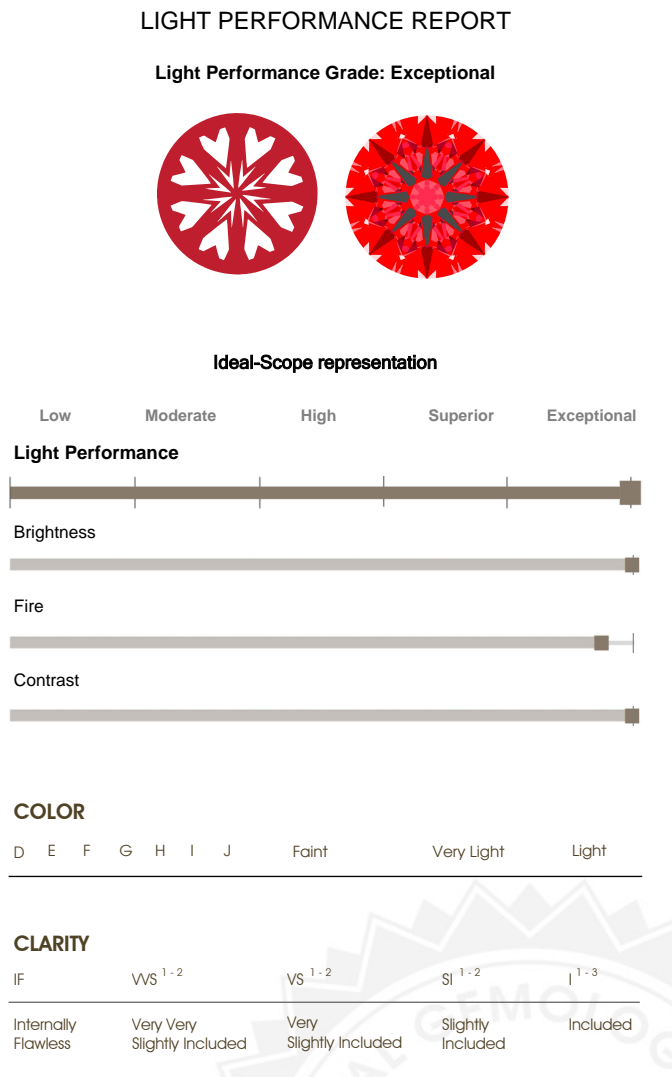
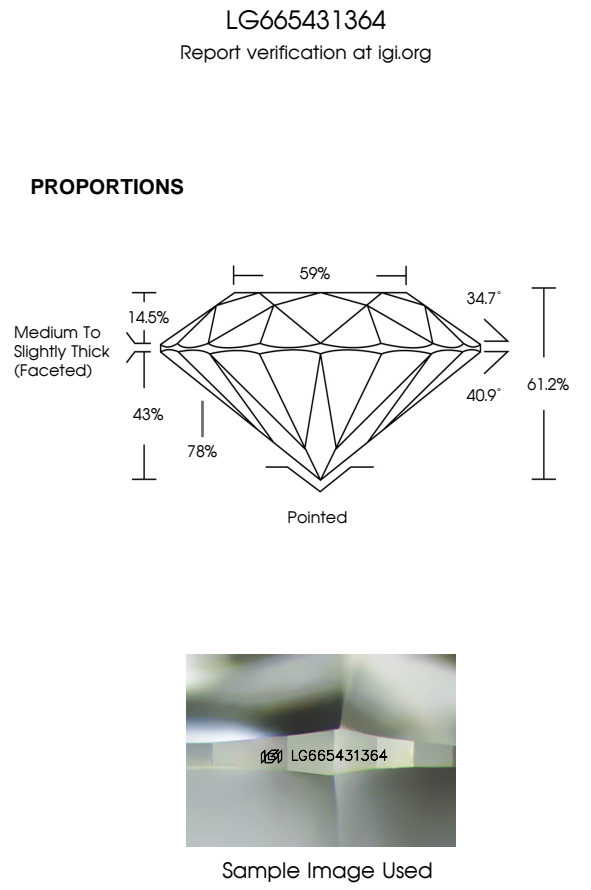
NONE


Inscription(s)

 LG665431364

Comments: HEARTS & ARROWS

This Laboratory Grown Diamond was created by Chemical Vapor Deposition (CVD) growth process. Type IIa





November 25, 2024

IGI Report Number

LG665431364

Description

LABORATORY GROWN DIAMOND

Shape and Cutting Style

ROUND BRILLIANT

Measurements

7.82 - 7.86 X 4.80 MM

GRADING RESULTS

Carat Weight

1.82 CARAT

Color Grade

E

Clarity Grade

VVS 2

Cut Grade

IDEAL

ADDITIONAL GRADING INFORMATION

Polish

EXCELLENT


Symmetry

EXCELLENT

Fluorescence

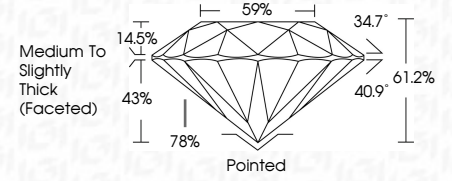
NONE

Inscription(s)

 LG665431364

Comments: HEARTS & ARROWS

This Laboratory Grown Diamond was created by Chemical Vapor Deposition (CVD) growth process. Type IIa



IGI

November 25, 2024

IGI Report No LG665431364

ROUND BRILLIANT

7.82 - 7.86 X 4.80 MM

Carat Weight1.82 CARAT

Color GradeE

Clarity GradeVVS 2

Cut GradeIDEAL

Depth61.2%

Table59%

GlideMedium To Slightly Thick (Faceted)

CuletPointed

PolishEXCELLENT

SymmetryEXCELLENT

FluorescenceNONE

Inscription(s) LG665431364

Comments: HEARTS & ARROWS

This Laboratory Grown Diamond was created by Chemical Vapor Deposition (CVD) growth process. Type IIa