



ELECTRONIC COPY

LABORATORY GROWN DIAMOND REPORT

LG666431711
Report verification at igi.org

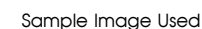
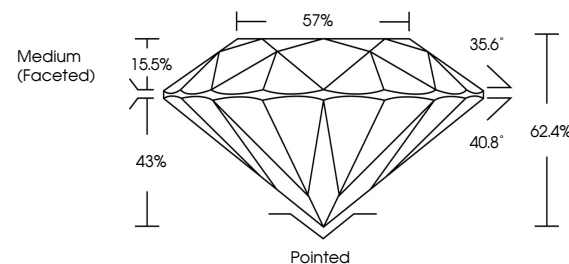
December 3, 2024	
IGI Report Number	LG666431711
Description	LABORATORY GROWN DIAMOND
Shape and Cutting Style	ROUND BRILLIANT
Measurements	7.36 - 7.41 X 4.61 MM
GRADING RESULTS	
Carat Weight	1.56 CARAT
Color Grade	G
Clarity Grade	VS 1
Cut Grade	IDEAL

ADDITIONAL GRADING INFORMATION

Polish	EXCELLENT
Symmetry	EXCELLENT
Fluorescence	NONE
Inscription(s)	151 LG666431711

Comments: This Laboratory Grown Diamond was created by Chemical Vapor Deposition (CVD) growth process.
Type IIa

PROPORTIONS



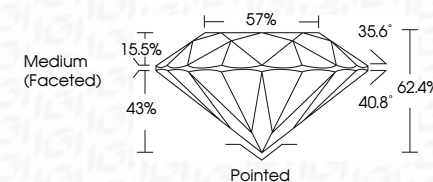
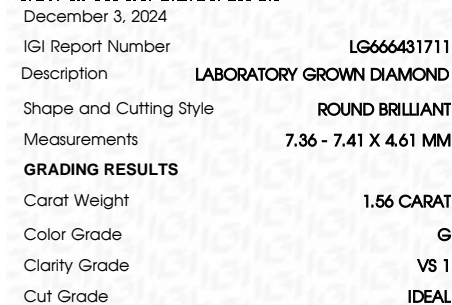
COLOR

D E F G H I J Faint Very Light Light

CLARITY

IF	VS ¹⁻²	VS ¹⁻²	SI ¹⁻²	I ¹⁻³
Internally Flawless	Very Very Slightly Included	Very Slightly Included	Slightly Included	Included

LABORATORY GROWN DIAMOND REPORT



ADDITIONAL GRADING INFORMATION

Polish	EXCELLENT
Symmetry	EXCELLENT
Fluorescence	NONE
Inscription(s)	 LG6664317111
Comments: This Laboratory Grown Diamond was created by Chemical Vapor Deposition (CVD) growth process.	
Type IIa	



© IGI 2020, International Gemological Institute

FD - 10 20

www.igi.org



December 3, 2024
IGI Report No LG666431711
ROUND BRILLIANT

7.36 - 7.41 X 4.61 MM
1.56 CARAT

7.36 - 7.41 X 4.61 MM	1.56 CARAT	G
Carat Weight		
Color Grade		

Clarity Grade	VS 1
Cut Grade	IDEAL
Depth	62.4%

Depth	62.4%
Table	57%
Girdle	Medium (Faceted)

Culet	Pointed
Polish	EXCELLENT
Symmetry	EXCELLENT

Symmetry	EXCELLENT
Fluorescence	NONE
Inscription(s)	165 LG666431711

Comments:
This Laboratory Grown Diamond was created by Chemical Vapor Deposition (CVD) growth process.
Type IIa