



INTERNATIONAL  
GEMOLOGICAL  
INSTITUTE

ELECTRONIC COPY

LABORATORY GROWN DIAMOND REPORT

December 3, 2024  
IGI Report Number LG667447471  
Description LABORATORY GROWN DIAMOND  
Shape and Cutting Style ROUND BRILLIANT  
Measurements 7.29 - 7.33 x 4.41 mm

GRADING RESULTS

Carat Weight 1.42 CARAT  
Color Grade D  
Clarity Grade VS 1  
Cut Grade IDEAL

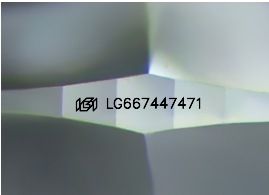
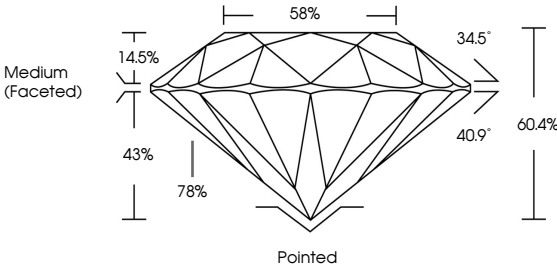
ADDITIONAL GRADING INFORMATION

Polish EXCELLENT  
Symmetry EXCELLENT  
Fluorescence NONE  
Inscription(s) IGI LG667447471

Comments: HEARTS & ARROWS  
This Laboratory Grown Diamond was created by  
Chemical Vapor Deposition (CVD) growth process.  
Type IIa

LG667447471  
Report verification at igi.org

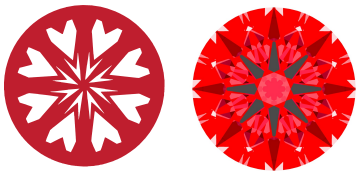
PROPORTIONS



Sample Image Used

LIGHT PERFORMANCE REPORT

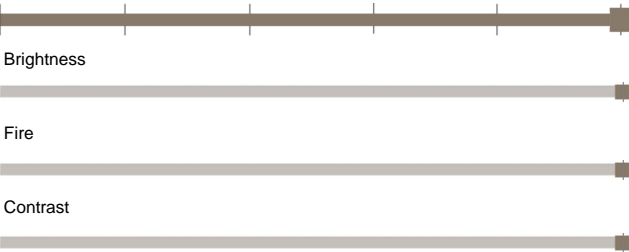
Light Performance Grade: Exceptional



Ideal-Scope representation

Low Moderate High Superior Exceptional

Light Performance



COLOR

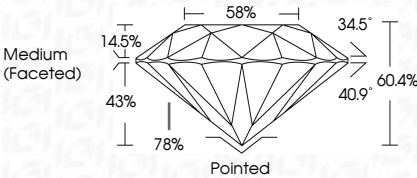
D E F G H I J Faint Very Light Light

CLARITY

IF	VVS 1 - 2	VS 1 - 2	SI 1 - 2	I 1 - 3
Internally Flawless	Very Very Slightly Included	Very Slightly Included	Slightly Included	Included



December 3, 2024  
IGI Report Number LG667447471  
Description LABORATORY GROWN DIAMOND  
Shape and Cutting Style ROUND BRILLIANT  
Measurements 7.29 - 7.33 X 4.41 MM  
GRADING RESULTS  
Carat Weight 1.42 CARAT  
Color Grade D  
Clarity Grade VS 1  
Cut Grade IDEAL



ADDITIONAL GRADING INFORMATION

Polish EXCELLENT  
Symmetry EXCELLENT  
Fluorescence NONE  
Inscription(s) IGI LG667447471

Comments: HEARTS & ARROWS  
This Laboratory Grown Diamond was created by  
Chemical Vapor Deposition (CVD) growth process.  
Type IIa



IGI

December 3, 2024  
IGI Report No LG667447471  
ROUND BRILLIANT  
7.29 - 7.33 X 4.41 MM  
Carat Weight 1.42 CARAT  
Color Grade D  
Clarity Grade VS 1  
Cut Grade IDEAL  
Depth 60.4%  
Table 78%  
Girdle Medium (Faceted)  
Culet Pointed  
Polish EXCELLENT  
Symmetry EXCELLENT  
Fluorescence NONE  
Inscription(s) IGI LG667447471  
Comments: HEARTS & ARROWS  
This Laboratory Grown Diamond was created by Chemical Vapor Deposition (CVD) growth process.  
Type IIa