



ELECTRONIC COPY

LABORATORY GROWN DIAMOND REPORT

December 3, 2024	
IGI Report Number	LG667456344
Description	LABORATORY GROWN DIAMOND
Shape and Cutting Style	OVAL BRILLIANT
Measurements	8.47 X 5.80 X 3.41 MM

GRADING RESULTS

Carat Weight	1.06 CARAT
Color Grade	E
Clarity Grade	VS 1

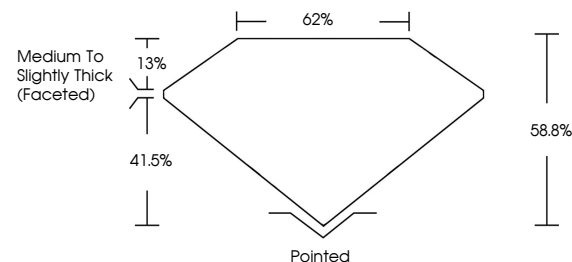
ADDITIONAL GRADING INFORMATION

Polish	EXCELLENT
Symmetry	EXCELLENT
Fluorescence	NONE
Inscription(s)	151 LG667456344

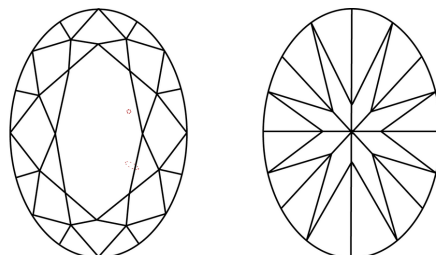
Comments: This Laboratory Grown Diamond was created by Chemical Vapor Deposition (CVD) growth process.
Type IIa

LG667456344
Report verification at lgi.org

PROPORTIONS



CLARITY CHARACTERISTICS



KEY TO SYMBOLS

Red symbols indicate internal characteristics.
Green symbols indicate external characteristics.



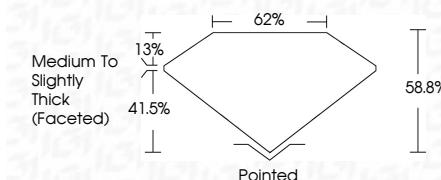
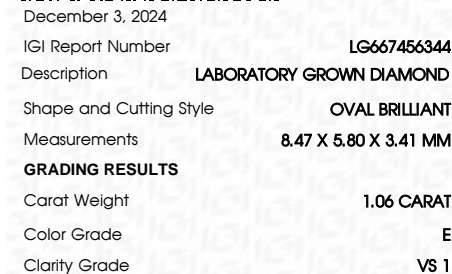
COLOR

D E F G H I J Faint Very Light Light

CLARITY

IF	VS ¹⁻²	VS ¹⁻²	SI ¹⁻²	I ¹⁻³
Internally Flawless	Very Very Slightly Included	Very Slightly Included	Slightly Included	Included

LABORATORY GROWN DIAMOND REPORT



ADDITIONAL GRADING INFORMATION

Polish	EXCELLENT
Symmetry	EXCELLENT
Fluorescence	NONE
Inscription(s)	 LG667456344
<p>Comments: This Laboratory Grown Diamond was created by Chemical Vapor Deposition (CVD) growth process.</p> <p>Type IIa</p>	



© IGI 2020, International Gemological Institute

FD - 10 20

www.igi.org



December 3, 2024
GJ Report No | G667456344

GI Report No. 15667465344	1.06 CARAT	
DIAMANT BRILLANT	E	
4.74 X 6.50 X 3.41 MM	VS 1	
	58.8%	
	62%	
	Medium to Slightly Thick (Faceted)	
	Polished	
	EXCELLENT	
	EXCELLENT	
	NONE	
	gem 15667465344	

Comments:
This Laboratory Grown Diamond was created by Chemical Vapor Deposition (CVD) growth process.