



ELECTRONIC COPY

LABORATORY GROWN DIAMOND REPORT

December 4, 2024	
IGI Report Number	LG668401855
Description	LABORATORY GROWN DIAMOND
Shape and Cutting Style	ROUND BRILLIANT
Measurements	9.03 - 9.08 X 5.50 MM

GRADING RESULTS

Carat Weight	2.74 CARATS
Color Grade	G
Clarity Grade	VS 1
Cut Grade	IDEAL

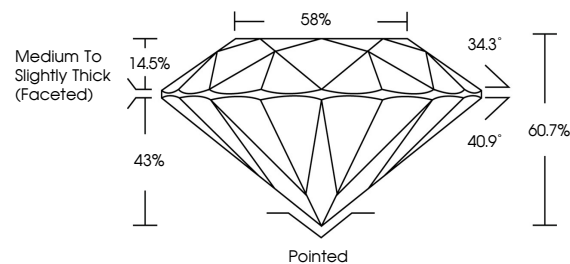
ADDITIONAL GRADING INFORMATION

Polish	EXCELLENT
Symmetry	EXCELLENT
Fluorescence	NONE
Inscription(s)	 LG668401855

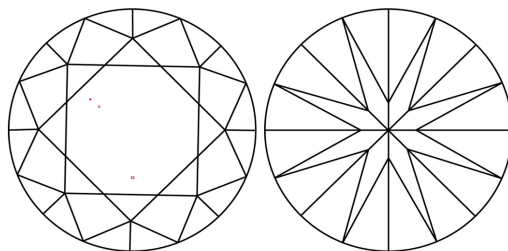
Comments: This Laboratory Grown Diamond was created by Chemical Vapor Deposition (CVD) growth process.
Type IIa

LG668401855
Report verification at igi.org

PROPORTIONS

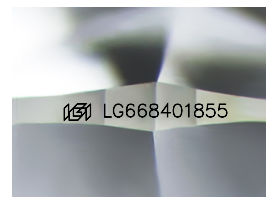


CLARITY CHARACTERISTICS



KEY TO SYMBOLS

Red symbols indicate internal characteristics.
Green symbols indicate external characteristics.



Sample Image Used

COLOR

D E F G H I J Faint Very Light Light

CLARITY

IF WS¹⁻² VS¹⁻² SI¹⁻² |¹⁻³

Internally Flawless	Very Very Slightly Included	Very Slightly Included	Slightly Included	Included
------------------------	--------------------------------	---------------------------	----------------------	----------

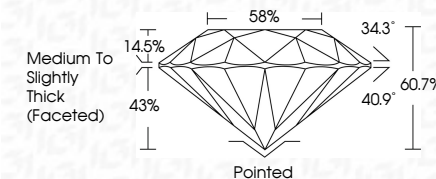
LABORATORY GROWN DIAMOND REPORT



December 4, 2024	
IGI Report Number	LG668401855
Description	LABORATORY GROWN DIAMOND
Shape and Cutting Style	ROUND BRILLIANT
Measurements	9.03 - 9.08 X 5.50 MM

GRADING RESULTS

Carat Weight	2.74 CARATS
Color Grade	G
Clarity Grade	VS 1
Cut Grade	IDEAL



ADDITIONAL GRADING INFORMATION

Polish	EXCELLENT
Symmetry	EXCELLENT
Fluorescence	NONE
Inscription(s)	 LG668401855
Comments: This Laboratory Grown Diamond was created by Chemical Vapor Deposition (CVD) growth process.	
Type IIa	



© IGI 2020, International Gemological Institute

FD - 10 20

www.igi.org

THIS DOCUMENT WAS PRODUCED WITH THE FOLLOWING SECURITY MEASURES: SPECIAL DOCUMENT PAPER, INK SCREENS, WATERMARK, BACKGROUND DESIGNS, HOLOGRAM AND OTHER SECURITY FEATURES NOT LISTED AND DO EXCEED DOCUMENT SECURITY INDUSTRY GUIDELINE

December 4, 2024	2/74 CARATS	VS 1	Pointed
GI Report No. LG566401855	Color Grade	IDEAL	EXCELLENT
ROUND BRILLANT	Carat Weight	60.17%	EXCELLENT
	Clarity Grade	89%	NONE
0.03 - 0.08 X 5.50 MM	Cut Grade	Medium to Slightly Thick (Faceted)	1691 LG566401855
	Depth		
	Table		
	Girdle		
	Culet		
	Polish		
	Symmetry		
	Fluorescence		
	Inscriptions(s)		

Comments:
 This is a Natural, Fancy, Grown Diamond was
 created by Chemical Vapor Deposition
 (CVD) growth process.
 Type IIa