



**INTERNATIONAL
GEMOLOGICAL
INSTITUTE**

ELECTRONIC COPY

LG668410255
Report verification at igi.org

LABORATORY GROWN DIAMOND REPORT



February 17, 2025

IGI Report Number **LG668410255**Description **LABORATORY GROWN DIAMOND**

Shape and Cutting Style **CUSHION MODIFIED
BRILLIANT**

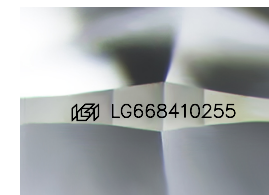
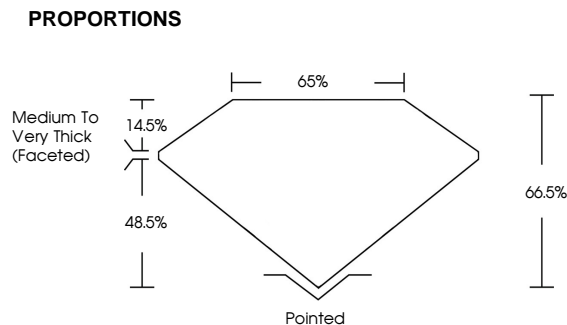
Measurements 6.10 X 5.50 X 3.66 MM

GRADING RESULTS

Carat Weight	1.00 CARAT
--------------	------------

Color Grade E

Clarity Grade VS 2



Sample Image Used

COLOR

D E F G H I J Faint Very Light Light

CLARITY

IF WS¹⁻² VS¹⁻² SI¹⁻² | 1-3

Internally Flawless	Very Very Slightly Included	Very Slightly Included	Slightly Included	Included
------------------------	--------------------------------	---------------------------	----------------------	----------

ADDITIONAL GRADING INFORMATION

Polish VERY GOOD

Symmetry VERY GOODFluorescence **NONE**Inscription(s) LG668410255

Comments: This Laboratory Grown Diamond was created by Chemical Vapor Deposition (CVD) growth process.
Type IIa



© IGI 2020, International Gemmological Institute

FD - 10 20

www.igi.org

THIS DOCUMENT WAS PRODUCED WITH THE FOLLOWING SECURITY MEASURES: SPECIAL DOCUMENT PAPER, INK SCREENS, WATERMARK BACKGROUND DESIGNS, HOLOGRAM AND OTHER SECURITY FEATURES NOT LISTED AND DO EXCEED DOCUMENT SECURITY INDUSTRY GUIDELINES

February 17, 2025

MM	1.00 CARAT	E	VS 2	66.6%	65%	Medium To Very Thick (Facetted)	Pointed	VERY GOOD	VERY GOOD	NONE	40011 G4669 J17055
----	------------	---	------	-------	-----	---------------------------------	---------	-----------	-----------	------	--------------------

Comments:
This Laboratory Grown Diamond was
created by Chemical Vapor Deposition
(CVD) growth process.