

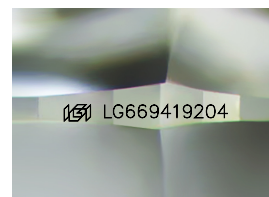
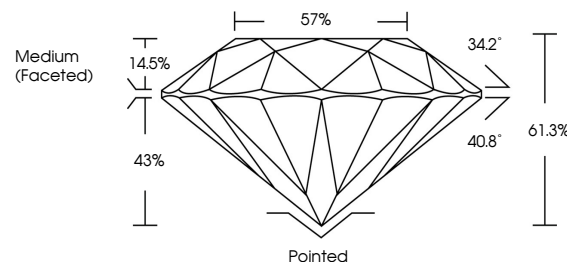


ELECTRONIC COPY

LABORATORY GROWN DIAMOND REPORT

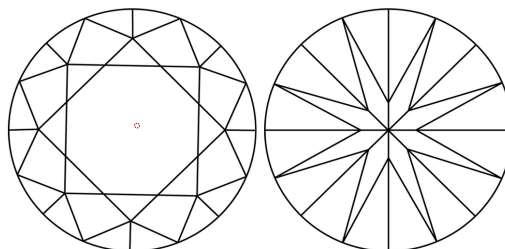
LG669419204
Report verification at lqi.org

PROPORTIONS



Sample Image Used

CLARITY CHARACTERISTICS



KEY TO SYMBOLS

Red symbols indicate internal characteristics.
Green symbols indicate external characteristics.

COLOR

D E F G H I J Faint Very Light Light

CLARITY

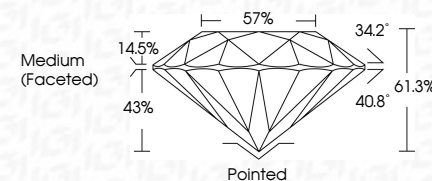
IF VS¹⁻² VS¹⁻² SI¹⁻² I¹⁻³

Internally Flawless	Very Very Slightly Included	Very Slightly Included	Slightly Included	Included
------------------------	--------------------------------	---------------------------	----------------------	----------

LABORATORY GROWN DIAMOND REPORT



January 22, 2025	
IGI Report Number	LG669419204
Description	LABORATORY GROWN DIAMOND
Shape and Cutting Style	ROUND BRILLIANT
Measurements	8.20 - 8.23 X 5.04 MM
GRADING RESULTS	
Carat Weight	2.09 CARATS
Color Grade	D
Clarity Grade	VVS 1
Cut Grade	IDEAL



ADDITIONAL GRADING INFORMATION

Polish	EXCELLENT
Symmetry	EXCELLENT
Fluorescence	NONE
Inscription(s)	 LG669419204
Comments: As Grown - No indication of post-growth treatment.	
This Laboratory Grown Diamond was created by High Pressure High Temperature (HPHT) growth process.	
Type II	



© IGI 2020, International Gemological Institute

FD - 10 20



THIS DOCUMENT WAS PRODUCED WITH THE FOLLOWING SECURITY MEASURES: SPECIAL DOCUMENT PAPER, INK SCREENS, WATERMARK, BACKGROUND DESIGNS, HOLOGRAM AND OTHER SECURITY FEATURES NOT LISTED AND DO EXCEED DOCUMENT SECURITY INDUSTRY GUIDELINES

www.igi.org

January 22, 2025
GI Report No LG669419204
ROUND BRILLIANT

3.20 - 8.23 X 5.04 MM

3.20 - 8.23 X 5.04 MM
 0.00 CARATS

Carat Weight	2.09 CARATS
Color Grade	D

Clarity Grade	WS 1
---------------	------

Quality Grade	Cut Grade	IDEAL
VVS1		

Depth	61.3%
Table	57%

labile	57%
Girdle	Medium (Faceted)

CONCLUSIONS

Culet	Pointed	Excellent
Polish		

Polish
Symmetry

Fluorescence	NONE

Inscription(s)	151 LG669419204

Comments: As Grown - No Indication of post-growth

As Grown - No indication of post-growth treatment.

This Laboratory Grown Diamond was created by High Pressure High Temperature (HPHT) growth process.

temperature (HPH) growth process,
type II