

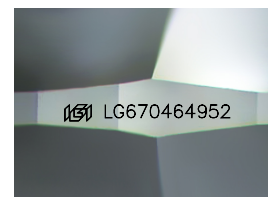
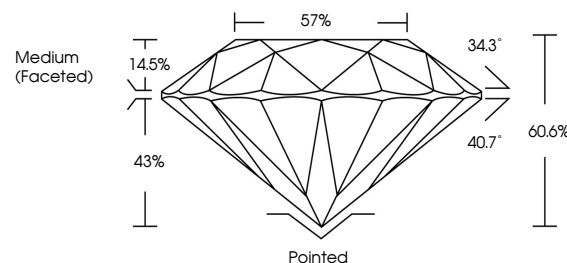


**ELECTRONIC COPY**

## LABORATORY GROWN DIAMOND REPORT

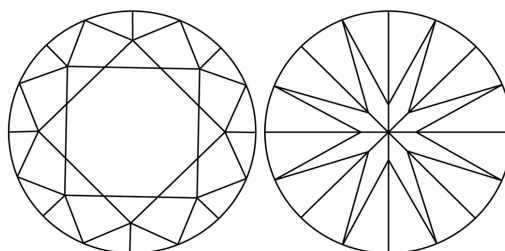
LG670464952  
Report verification at [igi.org](https://igi.org)

## PROPORTIONS



Sample Image Used

## CLARITY CHARACTERISTICS



## KEY TO SYMBOLS

Red symbols indicate internal characteristics.  
Green symbols indicate external characteristics.



**www.igi.org**

## COLOR

D E F G H I J Faint Very Light Light

## CLARITY

IF WS<sup>1-2</sup> VS<sup>1-2</sup> SI<sup>1-2</sup> |<sup>1-3</sup>

Internally Flawless	Very Very Slightly Included	Very Slightly Included	Slightly Included	Included
------------------------	--------------------------------	---------------------------	----------------------	----------



© IGI 2020, International Gemological Institute

FD - 10 20

THIS DOCUMENT WAS PRODUCED WITH THE FOLLOWING SECURITY MEASURES: SPECIAL DOCUMENT PAPER, INK SCREENS, WATERMARK, BACKGROUND DESIGNS, HOLOGRAM AND OTHER SECURITY FEATURES NOT LISTED AND DO EXCEED DOCUMENT SECURITY INDUSTRY GUIDELINES

## LABORATORY GROWN DIAMOND REPORT



January 28, 2025

IGI Report Number **LG670464952**Description **LABORATORY GROWN DIAMOND**Shape and Cutting Style **ROUND BRILLIANT**

Measurements 8.14 - 8.18 X 4.94 MM

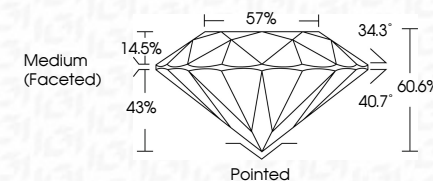
## GRADING RESULTS

Carat Weight **2.00 CARATS**

Color Grade

Clarity Grade **INTERNALLY FLAWLESS**

Cut Grade **IDEAL**



### ADDITIONAL GRADING INFORMATION

Polish **EXCELLENT**Symmetry **EXCELLENT**Fluorescence **NONE**Inscription(s)  LG670464952

Comments: HEARTS & ARROWS

As Grown - No indication of post-growth treatment.

This Laboratory Grown Diamond was created by High Pressure High Temperature (HPHT) growth process.

Type II



<b>January 28, 2026</b>	<b>2.00 CARATS</b>
<b>GJ Report No LG70464952</b>	<b>D</b>
<b>ROUND BRILLIANT</b>	<b>2.00 CARATS</b>
<b>14 - 14 X 4.54 MM</b>	
<b>Color Weight</b>	
<b>Carat Grade</b>	
<b>Clarity Grade</b>	<b>IF</b>
<b>Cut Grade</b>	<b>IDGAL</b>
<b>Depth</b>	<b>60.6%</b>
<b>Table</b>	<b>57%</b>
<b>Girdle</b>	<b>Medium (Faceted)</b>
<b>Culet</b>	<b>Pointed</b>
<b>Polish</b>	<b>EXCELLENT</b>
<b>Symmetry</b>	<b>EXCELLENT</b>
<b>Fluorescence</b>	<b>NONE</b>
<b>Inscriptions(s)</b>	<b>lgj LG70464952</b>
<b>Comments:</b>	
-EAGRS & ARROWS	
-No indication of post-growth treatment.	
This Laboratory Grown Diamond was created by High Pressure High Temperature (HPHT) growth process.	