



**INTERNATIONAL
GEMOLOGICAL
INSTITUTE**

ELECTRONIC COPY

LG671437476
Report verification at [igi.org](https://www.igi.org)

LABORATORY GROWN DIAMOND REPORT



January 7, 2025

IGI Report Number **LG671437476**

Description	LABORATORY GROWN DIAMOND
-------------	--------------------------

Shape and Cutting Style **PEAR BRILLIANT**

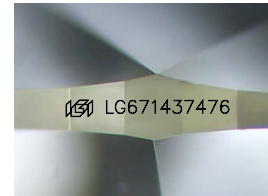
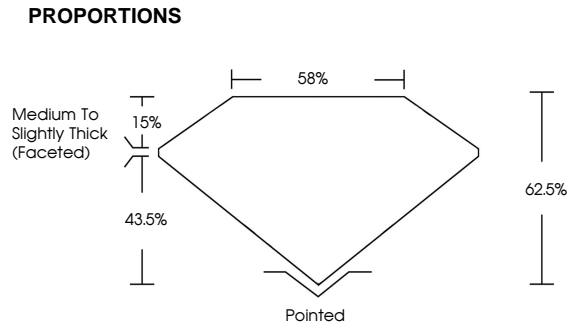
Measurements 10.02 X 6.10 X 3.81 MM

GRADING RESULTS

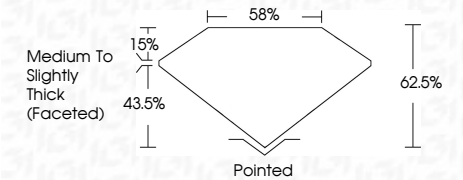
Carat Weight **1.32 CARAT**

Color Grade	E
-------------	---

Clarity Grade	SI 1
---------------	------



Sample Image Used



COLOR

D E F G H I J Faint Very Light Light

CLARITY

IF WS¹⁻² VS¹⁻² SI¹⁻² I¹⁻³

Internally Flawless	Very Very Slightly Included	Very Slightly Included	Slightly Included	Included
------------------------	--------------------------------	---------------------------	----------------------	----------

ADDITIONAL GRADING INFORMATION

Polish **EXCELLENT**Symmetry **EXCELLENT**Fluorescence **NONE**Inscription(s) LG671437476

Comments: This Laboratory Grown Diamond was created by Chemical Vapor Deposition (CVD) growth process.
Type IIa



IGI



© IGI 2020, International Gemological Institute

FD - 10 20



THIS DOCUMENT WAS PRODUCED WITH THE FOLLOWING SECURITY MEASURES: SPECIAL DOCUMENT PAPER, INK SCREENS, WATERMARK BACKGROUND DESIGNS, HOLOGRAM AND OTHER SECURITY FEATURES NOT LISTED AND DO EXCEED DOCUMENT SECURITY INDUSTRY GUIDELINES

January 7, 2025
IGI Report No LG671437476
PEAR BRILLIANT

10.02 X 6.10 X 3.81 MM
Carat Weight 1.32 CARAT

Carat Weight	1.32 CARAT
Color Grade	E

Clarity Grade	SI 1
Depth	62.5%
Table	58%

Medium To Slightly Thick (Faceted)

	Pointed
Culet	
Polish	EXCELLENT
Symmetry	EXCELLENT

Fluorescence	INSCRIPTION
	NONE
	LG671437476

Comments:
This Laboratory Grown Diamond was created by Chemical Vapor Deposition

Comments:
This Laboratory Grown Diamond was created by Chemical Vapor Deposition (CVD) growth process.
Type IIa

type III

www.igi.org