



**ELECTRONIC COPY**

## LABORATORY GROWN DIAMOND REPORT

LG671440513  
Report verification at [igi.org](https://igi.org)

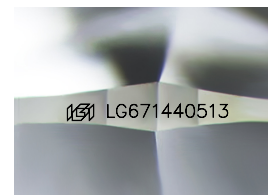
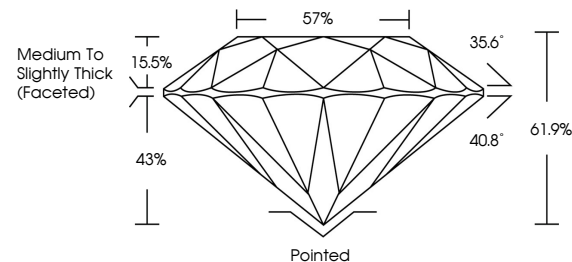
|                         |                          |
|-------------------------|--------------------------|
| December 26, 2024       |                          |
| IGI Report Number       | LG671440513              |
| Description             | LABORATORY GROWN DIAMOND |
| Shape and Cutting Style | ROUND BRILLIANT          |
| Measurements            | 6.42 - 6.43 X 3.98 MM    |
| GRADING RESULTS         |                          |
| Carat Weight            | 1.01 CARAT               |
| Color Grade             | D                        |
| Clarity Grade           | VVS 2                    |
| Cut Grade               | IDEAL                    |

### ADDITIONAL GRADING INFORMATION

|                |   |
|----------------|---|
| Polish         | EXCELLENT   |
| Symmetry       | EXCELLENT   |
| Fluorescence   | NONE  |
| Inscription(s) |  LG671440513 |

Comments: As Grown - No indication of post-growth treatment.  
This Laboratory Grown Diamond was created by High Pressure High Temperature (HPHT) growth process.  
Type II

## PROPORTIONS



Sample Image Used

COLOR

D E F G H I J Faint Very Light Light

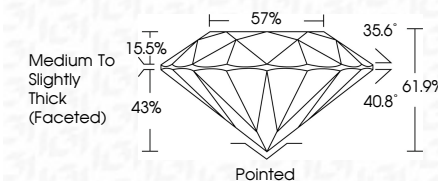
## CLARITY

| IF                  | VS <sup>1-2</sup>           | VS <sup>1-2</sup>      | SI <sup>1-2</sup> | I <sup>1-3</sup> |
|---------------------|-----------------------------|------------------------|-------------------|------------------|
| Internally Flawless | Very Very Slightly Included | Very Slightly Included | Slightly Included | Included         |


## LABORATORY GROWN DIAMOND REPORT



|                         |                          |
|-------------------------|--------------------------|
| December 26, 2024       |                          |
| IGI Report Number       | LG671440513              |
| Description             | LABORATORY GROWN DIAMOND |
| Shape and Cutting Style | ROUND BRILLIANT          |
| Measurements            | 6.42 - 6.43 X 3.98 MM    |
| GRADING RESULTS         |                          |
| Carat Weight            | 1.01 CARAT               |
| Color Grade             | D                        |
| Clarity Grade           | VVS 2                    |
| Cut Grade               | IDEAL                    |



### ADDITIONAL GRADING INFORMATION

|  |   |
|--|---|
| Polish   | EXCELLENT   |
| Symmetry   | EXCELLENT   |
| Fluorescence   | NONE  |
| Inscription(s)   |  LG671440513 |
| Comments: As Grown - No indication of post-growth treatment.                                       |   |
| This Laboratory Grown Diamond was created by High Pressure High Temperature (HPHT) growth process. |   |
| Type II  |   |



© IGI 2020, International Gemological Institute

FD - 10 20



THIS DOCUMENT WAS PRODUCED WITH THE FOLLOWING SECURITY MEASURES: SPECIAL DOCUMENT PAPER, INK SCREENS, WATERMARK, BACKGROUND DESIGNS, HOLOGRAM AND OTHER SECURITY FEATURES NOT LISTED AND DO EXCEED DOCUMENT SECURITY INDUSTRY GUIDELINES

**www.igi.org**

December 26, 2024

Report No. LG671440513

ROUND BRILLIANT  
5.42 - 6.43 X 3.98 MM

5.42 - 6.43 X 3.98 MM  
Carat Weight 1.01 CARAT

| Color Grade | D |
|-------------|---|
|-------------|---|

| Clarity Grade | WS2  |
|---------------|------|
| FL            | 0.00 |
| IF            | 0.00 |
| VS1           | 0.00 |
| VS2           | 0.00 |
| SI1           | 0.00 |
| SI2           | 0.00 |
| I1            | 0.00 |
| I2            | 0.00 |
| I3            | 0.00 |
| P1            | 0.00 |
| P2            | 0.00 |
| P3            | 0.00 |
| NP            | 0.00 |
| CA            | 0.00 |

|           | IDEAL |
|-----------|-------|
| Out Grade |       |
| Depth     | 41.08 |

|       |       |
|-------|-------|
| Depth | 61.9% |
| Table | 57%   |

Girdle

Thick (Faceted)

|        |           |
|--------|-----------|
| Culet  | Pointed   |
| Polish | EXCELLENT |

|          |           |
|----------|-----------|
| Polish   | EXCELLENT |
| Symmetry | EXCELLENT |

| Fluorescence    | NONE                |
|-----------------|---------------------|
| Excitation (nm) | 488   647   405   3 |

| Inscription(s) | 1991 LG671440513 |
|----------------|------------------|
|                |                  |

Comments:  
As Grown - No Indication of post-growth

**AS GROWN - NO indication of post-growth treatment.**

is laboratory grown material was created by High Pressure High Temperature (HPHT) growth process.

Type II  
temperature (HTM) growth process.