

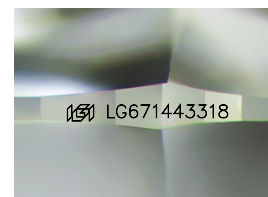
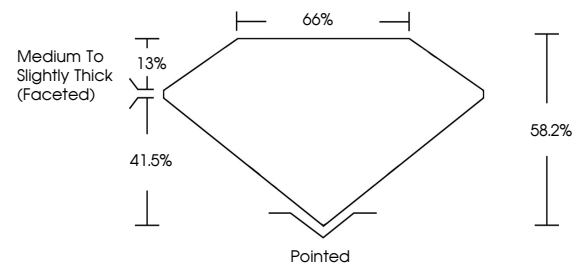


ELECTRONIC COPY

LABORATORY GROWN DIAMOND REPORT

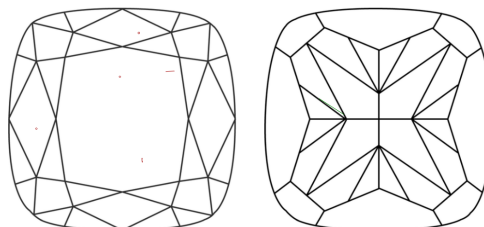
LG671443318
Report verification at igi.org

PROPORTIONS



Sample Image Used

CLARITY CHARACTERISTICS



KEY TO SYMBOLS

Red symbols indicate internal characteristics.
Green symbols indicate external characteristics.

COLOR

D E F G H I J Faint Very Light Light

CLARITY

IF WS¹⁻² VS¹⁻² SI¹⁻² |¹⁻³

Internally Flawless	Very Very Slightly Included	Very Slightly Included	Slightly Included	Included
------------------------	--------------------------------	---------------------------	----------------------	----------

LABORATORY GROWN DIAMOND REPORT



January 10, 2025

IGI Report Number **LG671443318**Description **LABORATORY GROWN DIAMOND**Shape and Cutting Style **SQUARE CUSHION BRILLIANT**

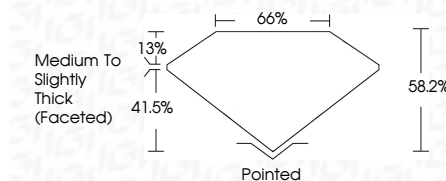
Measurements **6.11 X 5.91 X 3.44 MM**

GRADING RESULTS

Carat Weight **1.05 CARAT**

Color Grade **FANCY VIVID PINK**

Clarity Grade VS 1



ADDITIONAL GRADING INFORMATION

Polish VERY GOOD

Symmetry VERY GOOD

Fluorescence SLIGHT

Inscription(s) LG671443318

Comments: This Laboratory Grown Diamond was created by Chemical Vapor Deposition (CVD) growth process.
Indications of post-growth treatment.



© IGI 2020, International Gemological Institute

FD - 10 20

www.igi.org

THIS DOCUMENT WAS PRODUCED WITH THE FOLLOWING SECURITY MEASURES: SPECIAL DOCUMENT PAPER, INK SCREENS, WATERMARK BACKGROUND DESIGNS, HOLOGRAM AND OTHER SECURITY FEATURES NOT LISTED AND DO EXCEED DOCUMENT SECURITY INDUSTRY GUIDELINES

January 10, 2025	GL Report No. LG571443318	1.05 CARAT
SIQUE CUSHION BRILLIANT		FANCY VIVID PINK
11.11 X 9.91 X 3.44 MM		Vs1
		58.2%
		65%
		Medium to Slightly Thick (Faceted)
		Pointed
		VERY GOOD
		VERY GOOD
		SLIGHT
		681 LG571443318

Comments: This Fancy Green Diamond was created by Chemical Vapor Deposition (CVD) growth process. Indications of post-growth treatment.