

**ELECTRONIC COPY**

## LABORATORY GROWN DIAMOND REPORT

March 3, 2025	
IGI Report Number	LG671456399
Description	LABORATORY GROWN DIAMOND
Shape and Cutting Style	ROUND BRILLIANT
Measurements	7.52 - 7.56 X 4.68 MM

## GRADING RESULTS

Carat Weight	1.64 CARAT
Color Grade	F
Clarity Grade	VVS 2
Cut Grade	IDEAL

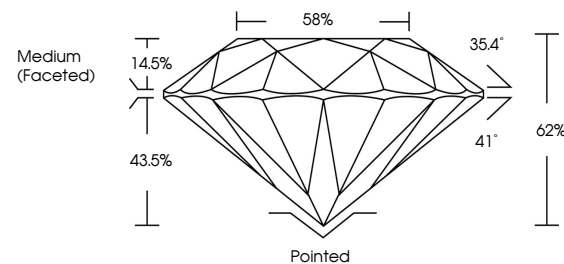
### ADDITIONAL GRADING INFORMATION

Polish	EXCELLENT
Symmetry	EXCELLENT
Fluorescence	NONE
Inscription(s)	 LG671456399

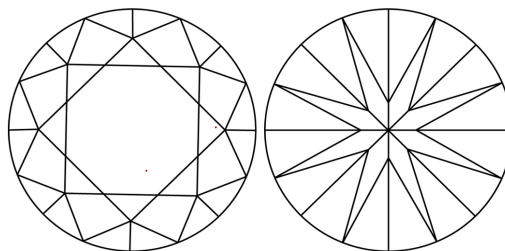
Comments: This Laboratory Grown Diamond was created by Chemical Vapor Deposition (CVD) growth process.  
Type IIa

LG671456399  
Report verification at [igi.org](https://igi.org)

## PROPORTIONS

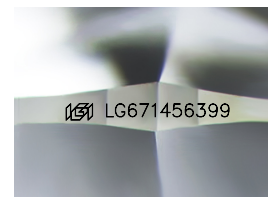


## CLARITY CHARACTERISTICS



## KEY TO SYMBOLS

Red symbols indicate internal characteristics.  
Green symbols indicate external characteristics.



Sample Image Used

**COLOR**

D E F G H I J Faint Very Light Light

## CLARITY

IF VS<sup>1-2</sup> VS<sup>1-2</sup> SI<sup>1-2</sup> 1-3

Internally Flawless	Very Very Slightly Included	Very Slightly Included	Slightly Included	Included
------------------------	--------------------------------	---------------------------	----------------------	----------

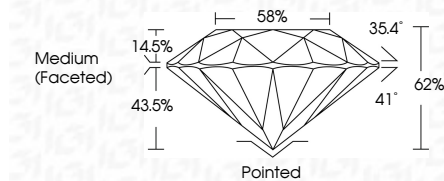
## LABORATORY GROWN DIAMOND REPORT




March 3, 2025	
IGI Report Number	LG6714563999
Description	LABORATORY GROWN DIAMOND
Shape and Cutting Style	ROUND BRILLIANT
Measurements	7.52 - 7.56 X 4.68 MM

## GRADING RESULTS

Carat Weight	1.64 CARAT
Color Grade	F
Clarity Grade	VVS 2
Cut Grade	IDEAL



### ADDITIONAL GRADING INFORMATION

Polish	EXCELLEN
Symmetry	EXCELLEN
Fluorescence	NON
Inscription(s)	 LG67145635
<p>Comments: This Laboratory Grown Diamond was created by Chemical Vapor Deposition (CVD) growth process.</p> <p>Type IIa</p>	



© IGI 2020, International Gemological Institute

FD - 10 20

March 3, 2025	
GL Report No. G507456399	
<b>STAINLESS STEEL</b>	
<b>ROUND BRILLANT</b>	
<b>SIZE - 7.55 X 4.68 MM</b>	
Carat Weight	
Color Grade	
Clarity Grade	
Cut Grade	
Depth	
Table	
Grade	
Medium	
Culet	
Polish	
Symmetry	
Fluorescence	
Inscriptions(s)	
691	
Comments:	
The Laboratory Grown Diamond is certified by Chemical Vapor Deposition (CVD) growth process. type IIa	