

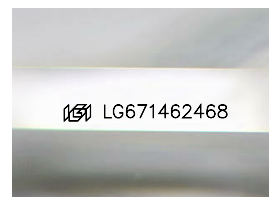
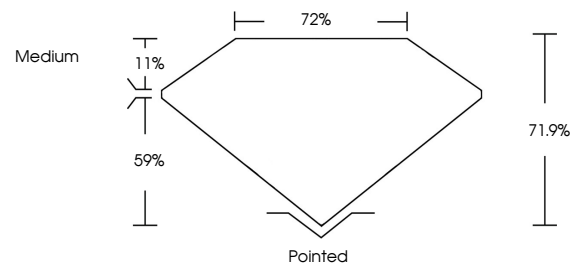


**ELECTRONIC COPY**

## LABORATORY GROWN DIAMOND REPORT

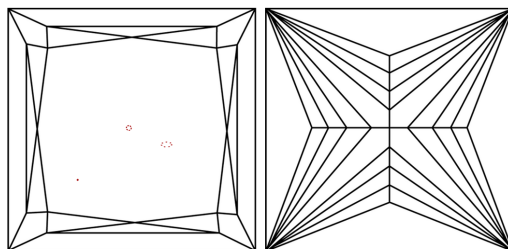
LG671462468  
Report verification at [igi.org](https://igi.org)

## PROPORTIONS



Sample Image Used

## CLARITY CHARACTERISTICS



## KEY TO SYMBOLS

Red symbols indicate internal characteristics.  
Green symbols indicate external characteristics.

## COLOR

D E F G H I J Faint Very Light Light

## CLARITY

IF      WS<sup>1-2</sup>      VS<sup>1-2</sup>      SI<sup>1-2</sup>      I<sup>1-3</sup>

Internally Flawless	Very Very Slightly Included	Very Slightly Included	Slightly Included	Included
------------------------	--------------------------------	---------------------------	----------------------	----------

## LABORATORY GROWN DIAMOND REPORT



January 7, 2025

IGI Report Number **LG671462468**Description **LABORATORY GROWN DIAMOND**Shape and Cutting Style **PRINCESS CUT**

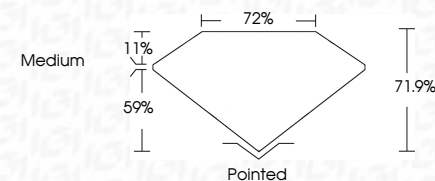
Measurements **8.00 X 7.91 X 5.69 MM**

## GRADING RESULTS

Carat Weight **3.07 CARATS**

Color Grade E

Clarity Grade VS 1



### ADDITIONAL GRADING INFORMATION

Polish **EXCELLENT**Symmetry **EXCELLENT**Fluorescence **NONE**Inscription(s)  LG671462468

Comments: This Laboratory Grown Diamond was created by Chemical Vapor Deposition (CVD) growth process.  
Type IIa



IGI



© IGI 2020, International Gemological Institute

FD - 10 20

**www.igi.org**

THIS DOCUMENT WAS PRODUCED WITH THE FOLLOWING SECURITY MEASURES: SPECIAL DOCUMENT PAPER, INK SCREENS, WATERMARK, BACKGROUND DESIGNS, HOLOGRAM AND OTHER SECURITY FEATURES NOT LISTED AND DO EXCEED DOCUMENT SECURITY INDUSTRY GUIDELINES

January 7, 2025  
 IGI Report No LG671462468  
 PRINCESS CLIT

3.00 X 7.91 X 5.69 MM	Carat Weight	3.07 CARATS
	Color Grade	E
	Clarity Grade	VS 1
	Depth	71.9%
	Table	72%
	Girdle	Medium
	Polish	Pointed
	Symmetry	EXCELLENT
	Fluorescence	EXCELLENT
	Inscriptions(s)	NONE
		Serial G57142469

Comments:  
This Laboratory Grown Diamond was  
created by Chemical Vapor Deposition  
(CVD) growth process.