



INTERNATIONAL GEMOLOGICAL INSTITUTE

ELECTRONIC COPY

LG671471728



December 28, 2024

IGI Report Number **LG671471728**
ROUND BRILLIANT
LABORATORY GROWN DIAMOND
5.72 - 5.74 X 3.44 MM

Carat Weight **0.68 CARAT**
Color Grade **D**
Clarity Grade **VVS 2**
Cut Grade **IDEAL**
Polish **EXCELLENT**
Symmetry **EXCELLENT**
Fluorescence **NONE**
Inscription(s) **IGI LG671471728**

Comments: HEARTS & ARROWS This Laboratory Grown Diamond was created by Chemical Vapor Deposition (CVD) growth process. Type IIa

LABORATORY GROWN DIAMOND REPORT

December 28, 2024

IGI Report Number

LG671471728

Description

LABORATORY GROWN DIAMOND

Shape and Cutting Style

ROUND BRILLIANT

Measurements

5.72 - 5.74 X 3.44 MM

GRADING RESULTS

Carat Weight **0.68 CARAT**

Color Grade **D**

Clarity Grade **VVS 2**

Cut Grade **IDEAL**

ADDITIONAL GRADING INFORMATION

Polish **EXCELLENT**

Symmetry **EXCELLENT**

Fluorescence **NONE**

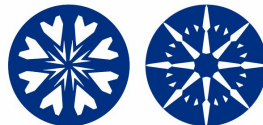
Inscription(s) **IGI LG671471728**

Comments: HEARTS & ARROWS

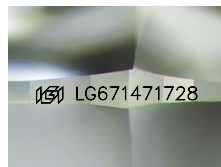
This Laboratory Grown Diamond was created by Chemical Vapor

Deposition (CVD) growth process.

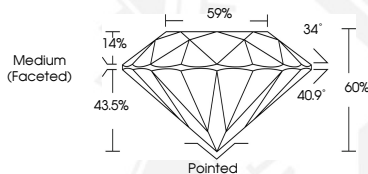
Type IIa



HEARTS & ARROWS



Sample Image Used



December 28, 2024

IGI Report Number **LG671471728**
ROUND BRILLIANT
LABORATORY GROWN DIAMOND
5.72 - 5.74 X 3.44 MM

Carat Weight **0.68 CARAT**
Color Grade **D**
Clarity Grade **VVS 2**
Cut Grade **IDEAL**
Polish **EXCELLENT**
Symmetry **EXCELLENT**
Fluorescence **NONE**
Inscription(s) **IGI LG671471728**

Comments: HEARTS & ARROWS This Laboratory Grown Diamond was created by Chemical Vapor Deposition (CVD) growth process. Type IIa



THIS DOCUMENT WAS PRODUCED WITH THE FOLLOWING SECURITY MEASURES: SPECIAL DOCUMENT PAPER, INK SCREENS, WATERMARK, BACKGROUND DESIGNS, HOLOGRAM AND OTHER SECURITY FEATURES NOT LISTED AND DO EXCEED DOCUMENT SECURITY INDUSTRY GUIDELINES.

For terms & conditions and to verify this report, please visit www.igi.org