



INTERNATIONAL  
GEMOLOGICAL  
INSTITUTE

ELECTRONIC COPY

LABORATORY GROWN DIAMOND REPORT

December 31, 2024  
IGI Report Number LG671473982  
Description LABORATORY GROWN DIAMOND  
Shape and Cutting Style ROUND BRILLIANT  
Measurements 9.93 - 9.98 x 6.05 mm

GRADING RESULTS

Carat Weight 3.66 CARATS  
Color Grade G  
Clarity Grade VVS 2  
Cut Grade IDEAL

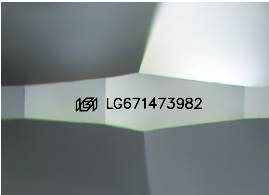
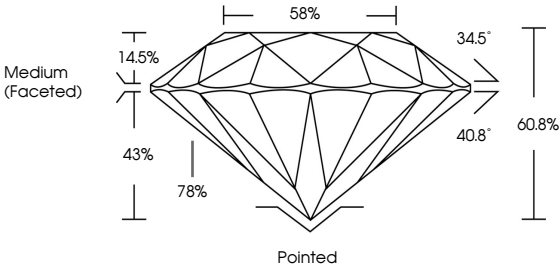
ADDITIONAL GRADING INFORMATION

Polish EXCELLENT  
Symmetry EXCELLENT  
Fluorescence NONE  
Inscription(s) IGI LG671473982

Comments: HEARTS & ARROWS  
This Laboratory Grown Diamond was created by  
Chemical Vapor Deposition (CVD) growth process.  
Type IIa

LG671473982  
Report verification at igi.org

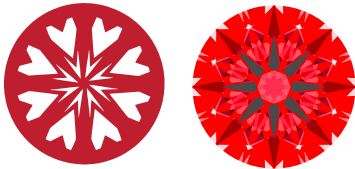
PROPORTIONS



Sample Image Used

LIGHT PERFORMANCE REPORT

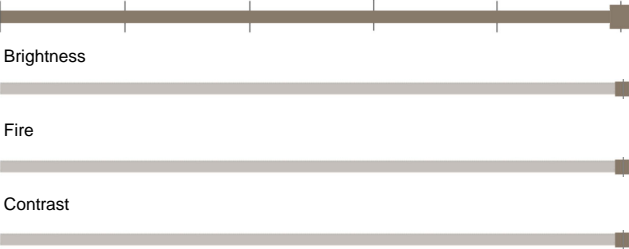
Light Performance Grade: Exceptional



Ideal-Scope representation

Low Moderate High Superior Exceptional

Light Performance



COLOR

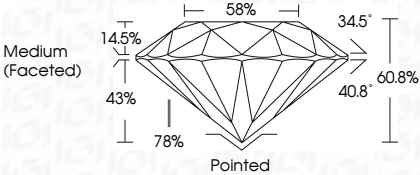
D E F G H I J Faint Very Light Light

CLARITY

IF VVS 1-2 VS 1-2 SI 1-2 I 1-3  
Internally Flawless Very Very Slightly Included Very Slightly Included Slightly Included Included



December 31, 2024  
IGI Report Number LG671473982  
Description LABORATORY GROWN DIAMOND  
Shape and Cutting Style ROUND BRILLIANT  
Measurements 9.93 - 9.98 X 6.05 MM  
GRADING RESULTS  
Carat Weight 3.66 CARATS  
Color Grade G  
Clarity Grade VVS 2  
Cut Grade IDEAL



ADDITIONAL GRADING INFORMATION

Polish EXCELLENT  
Symmetry EXCELLENT  
Fluorescence NONE  
Inscription(s) IGI LG671473982

Comments: HEARTS & ARROWS  
This Laboratory Grown Diamond was created by  
Chemical Vapor Deposition (CVD) growth process.  
Type IIa



IGI



December 31, 2024  
IGI Report No LG671473982  
ROUND BRILLIANT  
9.93 - 9.98 X 6.05 MM  
Carat Weight 3.66 CARATS  
Color Grade G  
Clarity Grade VVS 2  
Cut Grade IDEAL  
Depth 60.8%  
Table 78%  
Girdle Medium (Faceted)  
Culet Pointed  
Polish EXCELLENT  
Symmetry EXCELLENT  
Fluorescence NONE  
Inscription(s) IGI LG671473982  
Comments: HEARTS & ARROWS  
This Laboratory Grown Diamond was created by Chemical Vapor Deposition (CVD) growth process.  
Type IIa