



# INTERNATIONAL GEMOLOGICAL INSTITUTE

ELECTRONIC COPY

LG671498385



January 2, 2025

IGI Report Number LG671498385  
ROUND BRILLIANT  
LABORATORY GROWN DIAMOND  
5.37 - 5.39 X 3.23 MM

Carat Weight 0.57 CARAT  
Color Grade D  
Clarity Grade VVS 2  
Cut Grade IDEAL  
Polish EXCELLENT  
Symmetry EXCELLENT  
Fluorescence NONE  
Inscription(s) IGI LG671498385

Comments: HEARTS & ARROWS This Laboratory Grown Diamond was created by Chemical Vapor Deposition (CVD) growth process. Type IIa

## LABORATORY GROWN DIAMOND REPORT

January 2, 2025  
IGI Report Number LG671498385  
Description LABORATORY GROWN DIAMOND  
Shape and Cutting Style ROUND BRILLIANT  
Measurements 5.37 - 5.39 X 3.23 MM

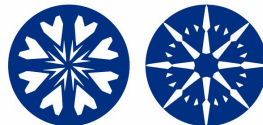
### GRADING RESULTS

Carat Weight 0.57 CARAT  
Color Grade D  
Clarity Grade VVS 2  
Cut Grade IDEAL

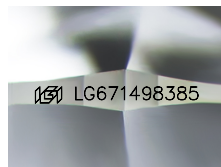
### ADDITIONAL GRADING INFORMATION

Polish EXCELLENT  
Symmetry EXCELLENT  
Fluorescence NONE  
Inscription(s) IGI LG671498385

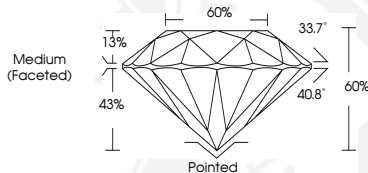
Comments: HEARTS & ARROWS  
This Laboratory Grown Diamond was created by Chemical Vapor Deposition (CVD) growth process. Type IIa



HEARTS & ARROWS



Sample Image Used



January 2, 2025

IGI Report Number LG671498385  
ROUND BRILLIANT  
LABORATORY GROWN DIAMOND  
5.37 - 5.39 X 3.23 MM

Carat Weight 0.57 CARAT  
Color Grade D  
Clarity Grade VVS 2  
Cut Grade IDEAL  
Polish EXCELLENT  
Symmetry EXCELLENT  
Fluorescence NONE  
Inscription(s) IGI LG671498385

Comments: HEARTS & ARROWS This Laboratory Grown Diamond was created by Chemical Vapor Deposition (CVD) growth process. Type IIa



THIS DOCUMENT WAS PRODUCED WITH THE FOLLOWING SECURITY MEASURES: SPECIAL DOCUMENT PAPER, INK SCREENS, WATERMARK, BACKGROUND DESIGNS, HOLOGRAM AND OTHER SECURITY FEATURES NOT LISTED AND DO EXCEED DOCUMENT SECURITY INDUSTRY GUIDELINES.

For terms & conditions and to verify this report, please visit [www.igi.org](http://www.igi.org)