



LG673405583
Report verification at iglu.org

ELECTRONIC COPY
LABORATORY GROWN DIAMOND REPORT

January 2, 2025	
IGI Report Number	LG673405583
Description	LABORATORY GROWN DIAMOND
Shape and Cutting Style	ROUND BRILLIANT
Measurements	10.23 - 10.27 x 6.26 mm

GRADING RESULTS

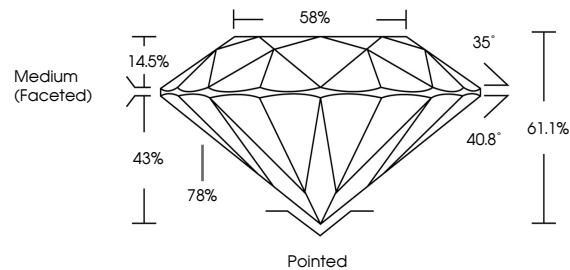
Carat Weight	4.05 CARATS
Color Grade	D
Clarity Grade	VVS 2
Cut Grade	IDEAL

ADDITIONAL GRADING INFORMATION

Polish	EXCELLENT
Symmetry	EXCELLENT
Fluorescence	NONE
Inscription(s)	 LG673405583

Comments: HEARTS & ARROWS
This Laboratory Grown Diamond was created by
Chemical Vapor Deposition (CVD) growth process.
Type IIa

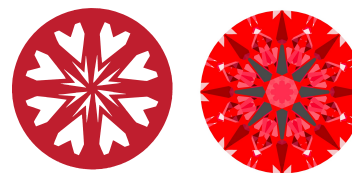
PROPORTIONS



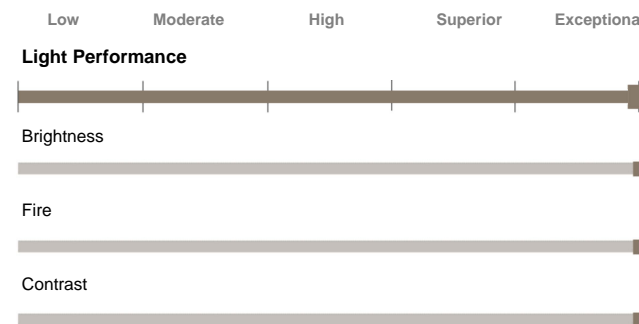
Sample Image Used

LIGHT PERFORMANCE REPORT

Light Performance Grade: Exceptional



Ideal-Scope representation



COLOR

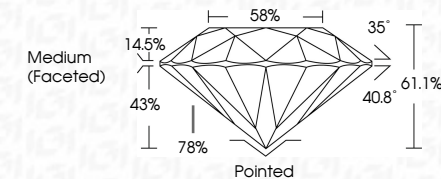
D E F G H I J Faint Very Light Light

CLARITY

IF	VVS ¹⁻²	VS ¹⁻²	SI ¹⁻²	I ¹⁻³
Internally Flawless	Very Very Slightly Included	Very Slightly Included	Slightly Included	Included



January 2, 2025	
IGI Report Number	LG673405583
Description	LABORATORY GROWN DIAMOND
Shape and Cutting Style	ROUND BRILLIANT
Measurements	10.23 - 10.27 X 6.26 MM
GRADING RESULTS	
Carat Weight	4.05 CARATS
Color Grade	D
Clarity Grade	VVS 2
Cut Grade	IDEAL



ADDITIONAL GRADING INFORMATION

Polish	EXCELLENT
Symmetry	EXCELLENT
Fluorescence	NONE
Inscription(s)	(15) LG673405583

Comments: HEARTS & ARROWS
This Laboratory Grown Diamond was created by
Chemical Vapor Deposition (CVD) growth process.
Type IIa



IG

January 2, 2026
(G) Report No LG73405583
ROUND BRILLIANT
10.29 - 10.27 X 6.26 MM
Carat Weight
Color Grade
Clarity Grade
Cut Grade
Depth
Table
Girdle
Culet
Polar Plot
Symmetry
Fluorescence
Description(s)
Medium

Comments:
HEARTS & ARROWS
This Laboratory grown Diamond created by Chemical Vapor Deposition (CVD) growth process.