



# INTERNATIONAL GEMOLOGICAL INSTITUTE

ELECTRONIC COPY

LG673429809



January 3, 2025

IGI Report Number LG673429809  
CUT CORNERED RECTANGULAR  
MODIFIED BRILLIANT  
LABORATORY GROWN DIAMOND

7.14 X 4.90 X 3.23 MM  
Carat Weight 0.98 CARAT  
Color Grade E  
Clarity Grade VS 2  
Polish EXCELLENT  
Symmetry EXCELLENT  
Fluorescence NONE  
Inscription(s) IGI LG673429809

Comments: This Laboratory Grown Diamond was created by Chemical Vapor Deposition (CVD) growth process. Type IIa

## LABORATORY GROWN DIAMOND REPORT

January 3, 2025  
IGI Report Number LG673429809  
Description LABORATORY GROWN DIAMOND  
Shape and Cutting Style CUT CORNERED RECTANGULAR MODIFIED BRILLIANT  
Measurements 7.14 X 4.90 X 3.23 MM

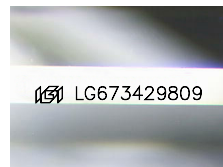
### GRADING RESULTS

Carat Weight 0.98 CARAT  
Color Grade E  
Clarity Grade VS 2

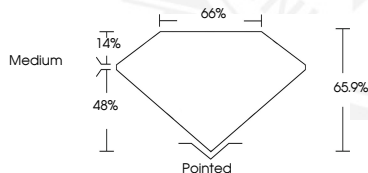
### ADDITIONAL GRADING INFORMATION

Polish EXCELLENT  
Symmetry EXCELLENT  
Fluorescence NONE  
Inscription(s) IGI LG673429809

Comments: This Laboratory Grown Diamond was created by Chemical Vapor Deposition (CVD) growth process. Type IIa



Sample Image Used



January 3, 2025

IGI Report Number LG673429809  
CUT CORNERED RECTANGULAR  
MODIFIED BRILLIANT  
LABORATORY GROWN DIAMOND

7.14 X 4.90 X 3.23 MM  
Carat Weight 0.98 CARAT  
Color Grade E  
Clarity Grade VS 2  
Polish EXCELLENT  
Symmetry EXCELLENT  
Fluorescence NONE  
Inscription(s) IGI LG673429809

Comments: This Laboratory Grown Diamond was created by Chemical Vapor Deposition (CVD) growth process. Type IIa



THIS DOCUMENT WAS PRODUCED WITH THE FOLLOWING SECURITY MEASURES: SPECIAL DOCUMENT PAPER, INK SCREENS, WATERMARK, BACKGROUND DESIGNS, HOLOGRAM AND OTHER SECURITY FEATURES NOT LISTED AND DO EXCEED DOCUMENT SECURITY INDUSTRY GUIDELINES.

For terms & conditions and to verify this report, please visit [www.igi.org](http://www.igi.org)