



ELECTRONIC COPY

LABORATORY GROWN DIAMOND REPORT

LG674511905
Report verification at igi.org

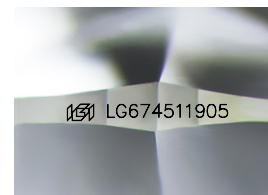
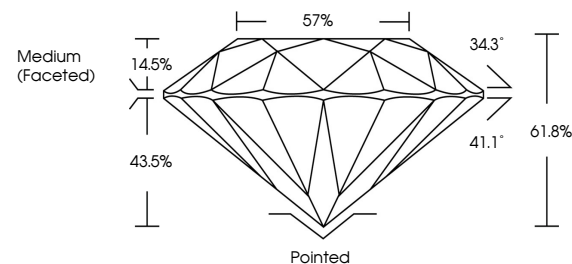
January 3, 2025	
IGI Report Number	LG674511905
Description	LABORATORY GROWN DIAMOND
Shape and Cutting Style	ROUND BRILLIANT
Measurements	6.44 - 6.46 X 3.98 MM
GRADING RESULTS	
Carat Weight	1.02 CARAT
Color Grade	D
Clarity Grade	VVS 2
Cut Grade	IDEAL

ADDITIONAL GRADING INFORMATION

Polish	EXCELLENT
Symmetry	EXCELLENT
Fluorescence	NONE
Inscription(s)	151 LG674511905

Comments: As Grown - No indication of post-growth treatment.
This Laboratory Grown Diamond was created by High Pressure High Temperature (HPHT) growth process.
Type II

PROPORTIONS



Sample Image Used

COLOR

D E F G H I J Faint Very Light Light

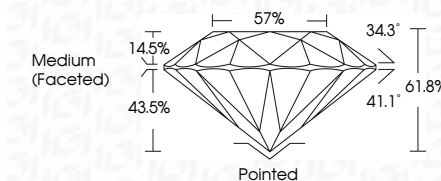
CLARITY

IF	VVS ¹⁻²	VS ¹⁻²	SI ¹⁻²	I ¹⁻³
Internally Flawless	Very Very Slightly Included	Very Slightly Included	Slightly Included	Included

LABORATORY GROWN DIAMOND REPORT



January 3, 2025	
IGI Report Number	LG674511905
Description	LABORATORY GROWN DIAMOND
Shape and Cutting Style	ROUND BRILLIANT
Measurements	6.44 - 6.46 X 3.98 MM
GRADING RESULTS	
Carat Weight	1.02 CARAT
Color Grade	D
Clarity Grade	VVS 2
Cut Grade	IDEAL



ADDITIONAL GRADING INFORMATION

Polish	EXCELLENT
Symmetry	EXCELLENT
Fluorescence	NONE
Inscription(s)	 LG674511905
Comments: As Grown - No indication of post-growth treatment.	
This Laboratory Grown Diamond was created by High Pressure High Temperature (HPHT) growth process.	
Type II	



© IGI 2020, International Gemological Institute

FD - 10 20

www.igi.org



THIS DOCUMENT WAS PRODUCED WITH THE FOLLOWING SECURITY MEASURES: SPECIAL DOCUMENT PAPER, INK SCREENS, WATERMARK, BACKGROUND DESIGNS, HOLOGRAM AND OTHER SECURITY FEATURES NOT LISTED AND DO EXCEED DOCUMENT SECURITY INDUSTRY GUIDELINES

January 3, 2025
GI Report No LG674511905
ROUND BRILLIANT

5.44 - 6.46 X 3.98 MM

5.44 - 6.46 X 3.98 MM
Carat Weight 1.02 CARAT

Catal Weight II	I.OZ CATAL
Color Grade	D

Clarity Grade	WS2
FL	
IF	
VVS	
VS	
SI	
I	

Depth	41.00%	IDEAL
Cut Grade		

Depth	61.8%
Table	57%

Girdle	Medium (Faceted)	Carat Weight
		0.72

7
4
1
6

Culet	Pointed
Polish	EXCELLENT

EXCELLENT

EXCELLENT

Symmetry

Fluorescence	NONE
Inscription(s)	1811 G-674511905

Registration (\$)

Comments:
As Grown - No Indication of post-growth

Treatment. This Laboratory Grown Diamond was

This laboratory growth medium was created by High Pressure High Temperature (HPHT) growth process.

Type II