

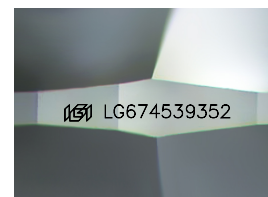
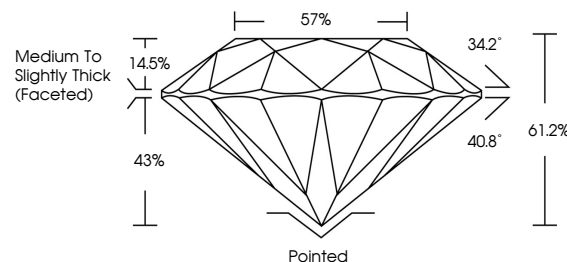


ELECTRONIC COPY

LABORATORY GROWN DIAMOND REPORT

LG674539352
Report verification at lgi.org

PROPORTIONS



Sample Image Used

CLARITY CHARACTERISTICS



KEY TO SYMBOLS

Red symbols indicate internal characteristics.
Green symbols indicate external characteristics.



www.igi.org

LABORATORY GROWN DIAMOND REPORT



January 23, 2025

IGI Report Number **LG674539352**Description **LABORATORY GROWN DIAMOND**Shape and Cutting Style **ROUND BRILLIANT**

Measurements 8.73 - 8.77 X 5.36 MM

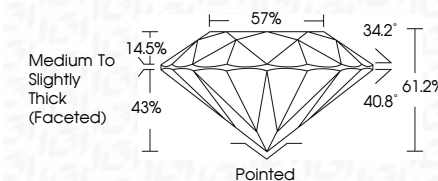
GRADING RESULTS

Carat Weight 2.51 CARATS

Color Grade

Clarity Grade **INTERNALLY FLAWLESS**

Cut Grade **IDEAL**



ADDITIONAL GRADING INFORMATION

Polish **EXCELLENT**Symmetry **EXCELLENT**Fluorescence **NONE**Inscription(s) LG674539352

Comments: HEARTS & ARROWS

As Grown - No indication of post-growth treatment.

This Laboratory Grown Diamond was created by High Pressure High Temperature (HPHT) growth process.

Type II



January 29, 2026	GI Report No LG57459382	ROUND BRILLIANT	2.51 CARATS	D	IF	IDEAL	61.2%	57%	Medium to Slightly Thick (Faceted)	Patched	EXCELLENT	NONE	(#) LG57459382
Color Weight	Carat Grade	Clarity Grade	Cut Grade	Depth	Table	Girdle	Symmetry	Fluorescence	Treatment	As Grown - No indication of post-growth treatment.	Comments:	HEARTS & ARROWS	Laboratory Grown Diamond was identified by its high temperature (HTH) growth process. Type II

© IGI 2020, International Gemological Institute

FD - 10 20



THIS DOCUMENT WAS PRODUCED WITH THE FOLLOWING SECURITY MEASURES: SPECIAL DOCUMENT PAPER, INK SCREENS, WATERMARK, BACKGROUND DESIGNS, HOLOGRAM AND OTHER SECURITY FEATURES NOT LISTED AND DO EXCEED DOCUMENT SECURITY INDUSTRY GUIDELINES