



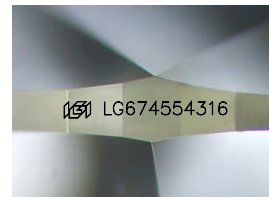
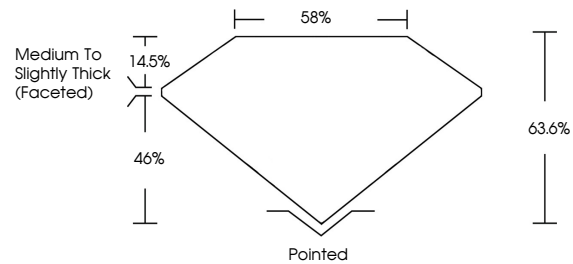
**INTERNATIONAL
GEMOLOGICAL
INSTITUTE**

ELECTRONIC COPY

LABORATORY GROWN DIAMOND REPORT

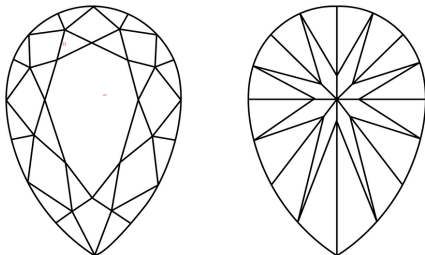
LG674554316
Report verification at igi.org

PROPORTIONS



Sample Image Used

CLARITY CHARACTERISTICS



KEY TO SYMBOLS

Red symbols indicate internal characteristics.
Green symbols indicate external characteristics.

COLOR

D E F G H I J Faint Very Light Light

CLARITY

IF	WS ¹⁻²	VS ¹⁻²	SI ¹⁻²	I ¹⁻³
----	-------------------	-------------------	-------------------	------------------

Internally Flawless	Very Very Slightly Included	Very Slightly Included	Slightly Included	Included
------------------------	--------------------------------	---------------------------	----------------------	----------



© IGI 2020, International Gemological Institute

FD - 10 20

www.igi.org

LABORATORY GROWN DIAMOND REPORT



January 10, 2025

IGI Report Number **LG674554316**

Description	LABORATORY GROWN DIAMOND
-------------	--------------------------

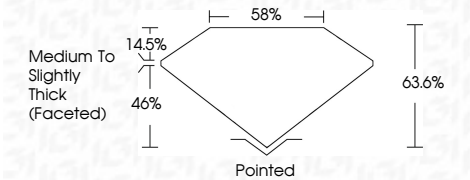
Shape and Cutting Style **PEAR BRILLIANT**

Measurements 10.00 X 6.38 X 4.06 MM

GRADING RESULTS

Carat Weight **1.55 CARAT**

Color Grade **D**

Clarity Grade VVS 2

ADDITIONAL GRADING INFORMATION

Polish **EXCELLENT**

Symmetry **EXCELLENT**

Fluorescence **NONE**Inscription(s) LG674554316

Comments: This Laboratory Grown Diamond was created by Chemical Vapor Deposition (CVD) growth process.
Type IIa



IGI

January 10, 2025	1.55 CARAT
IGI Report No. LG74554316	D
PEARL BRILLIANT	VVS 2
10.00 X 6.38 X 4.06 MM	63.0%
Corat Weight	59%
Color Grade	Medium to Slightly Thick (Fasted)
Clarity Grade	Polished
Depth	EXCELLENT
Table	EXCELLENT
Girdle	NONE
	891 LG74554316
Comments: The Laboratory Grown Diamond was created by Chemical Vapor Deposition (CVD) growth process. Type Ila	

Comments:
This Laboratory Grown Diamond was created by Chemical Vapor Deposition (CVD) growth process.
Type IIa