



LABORATORY GROWN DIAMOND REPORT

Measurements	8.38 - 8.40 x 5.15 mm
--------------	-----------------------

GRADING RESULTS

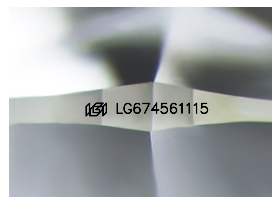
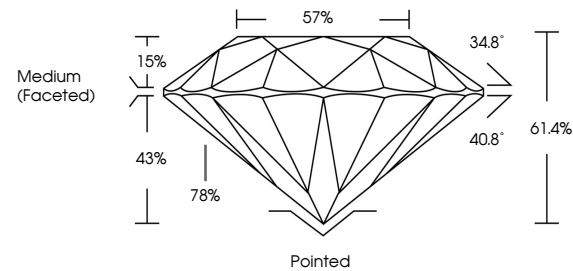
Cut Grade IDEAL

ADDITIONAL GRADING INFORMATION

Fluorescence **NONE**

Type IIa

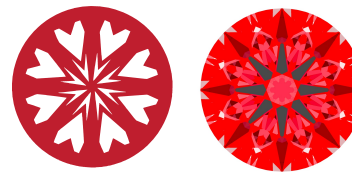
PROPORTIONS



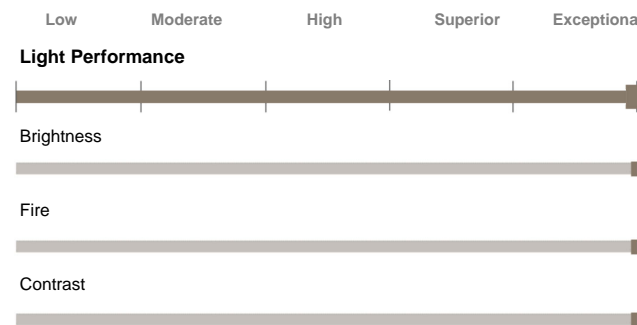
Sample Image Used

LIGHT PERFORMANCE REPORT

Light Performance Grade: Exceptional



Ideal-Scope representation



COLOR



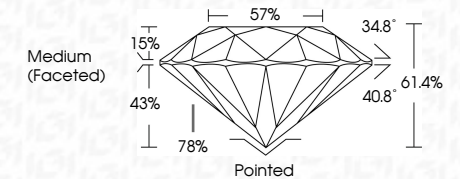
CLARITY



FD - 10 20



THIS DOCUMENT WAS PRODUCED WITH THE FOLLOWING SECURITY MEASURES: SPECIAL DOCUMENT PAPER, INK SCREENS, WATERMARK BACKGROUND DESIGNS, HOLOGRAM AND OTHER SECURITY FEATURES NOT LISTED AND DO EXCEED DOCUMENT SECURITY INDUSTRY GUIDELINES



ADDITIONAL GRADING INFORMATION

This Laboratory Grown Diamond was created by Chemical Vapor Deposition (CVD) growth process.
Type IIa



January 4, 2025	
IGI Report No LG574561116	
ROUND BRILLIANT	
3.38 - 8.40 X 5.15 MM	
Carat Weight	2.22 CARATS
Color Grade	E
Clarity Grade	VVS 2
Cut Grade	IDEAL
Depth	61.4%
Table	57%
Girdle	Medium (Faceted)
Culet	Pointed
Polish	EXCELLENT
Symmetry	EXCELLENT
Fluorescence	NONE
Inscriptions(s)	© LG574561116
Comments:	
HEARTS & ARROWS	
The Laboratory Grown Diamond was	
created by Chemical Vapor Deposition	
(CVD) growth process.	
Type IIA	