



ELECTRONIC COPY

LABORATORY GROWN DIAMOND REPORT

January 20, 2025	
IGI Report Number	LG675530196
Description	LABORATORY GROWN DIAMOND
Shape and Cutting Style	ROUND BRILLIANT
Measurements	8.21 - 8.23 X 4.97 MM

GRADING RESULTS

Carat Weight	2.07 CARATS
Color Grade	FANCY VIVID BLUE
Clarity Grade	VS 1
Cut Grade	IDEAL

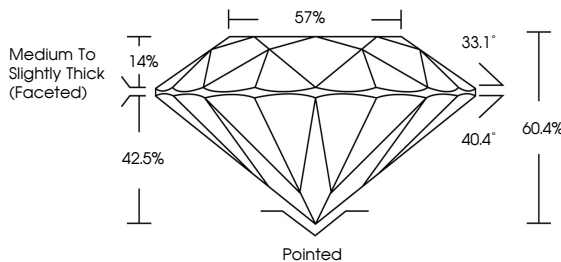
ADDITIONAL GRADING INFORMATION

Polish	EXCELLENT
Symmetry	EXCELLENT
Fluorescence	NONE
Inscription(s)	 LG675530196

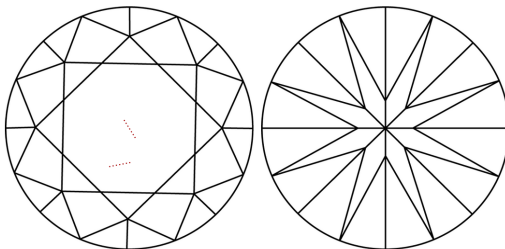
Comments: This Laboratory Grown Diamond was created by Chemical Vapor Deposition (CVD) growth process.
Indications of post-growth treatment.

LG675530196
Report verification at igi.org

PROPORTIONS

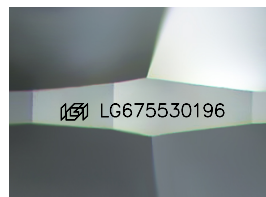


CLARITY CHARACTERISTICS



KEY TO SYMBOLS

Red symbols indicate internal characteristics.
Green symbols indicate external characteristics.



Sample Image Used

COLOR

D E F G H I J Faint Very Light Light

CLARITY

IF WS¹⁻² VS¹⁻² SI¹⁻² I¹⁻³

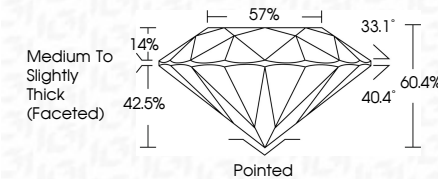
Internally Flawless	Very Very Slightly Included	Very Slightly Included	Slightly Included	Included
------------------------	--------------------------------	---------------------------	----------------------	----------



January 20, 2025	
IGI Report Number	LG675530196
Description	LABORATORY GROWN DIAMOND
Shape and Cutting Style	ROUND BRILLIANT
Measurements	8.21 - 8.23 X 4.97 MM

GRADING RESULTS

Carat Weight	2.07 CARATS
Color Grade	FANCY VIVID BLUE
Clarity Grade	VS 1
Cut Grade	IDEAL



ADDITIONAL GRADING INFORMATION

Polish	EXCELLENT
Symmetry	EXCELLENT
Fluorescence	NONE
Inscription(s)	 LG675530196
<p>Comments: This Laboratory Grown Diamond was created by Chemical Vapor Deposition (CVD) growth process.</p> <p>Indications of post-growth treatment.</p>	



IG



© IGI 2020, International Gemological Institute

FD - 10 20

www.igi.org

THIS DOCUMENT WAS PRODUCED WITH THE FOLLOWING SECURITY MEASURES: SPECIAL DOCUMENT PAPER, INK SCREENS, WATERMARK, BACKGROUND DESIGNS, HOLOGRAM AND OTHER SECURITY FEATURES NOT LISTED AND DO EXCEED DOCUMENT SECURITY INDUSTRY GUIDELINE

January 20, 2025
IGI Report No LG675530196
POUND BRILLIANT

8.21 - 8.23 X 4.97 MM		2.07 CARATS	FANCY VIVID BLUE	VS 1	IDEAL	50-60%	57%	Medium To Slightly Thick (faceted)	Pointed	EXCELLENT	EXCELLENT	NONE
Carat Weight	Color Grade	Clarity Grade	Cut Grade	Depth	Table	Girdle	Culet	Polish	Symmetry	Fluorescence		

Comments:
This Laboratory Grown Diamond was created by Chemical Vapor Deposition (CVD) growth process.