



ELECTRONIC COPY

LABORATORY GROWN DIAMOND REPORT

February 3, 2025	
IGI Report Number	LG675537111
Description	LABORATORY GROWN DIAMOND
Shape and Cutting Style	ROUND BRILLIANT
Measurements	6.46 - 6.47 X 4.04 MM

GRADING RESULTS

Carat Weight	1.04 CARAT
Color Grade	E
Clarity Grade	VVS 1
Cut Grade	IDEAL

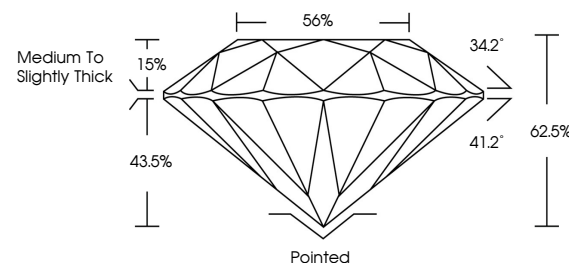
ADDITIONAL GRADING INFORMATION

Polish	VERY GOOD
Symmetry	EXCELLENT
Fluorescence	NONE
Inscription(s)	 LG675537111

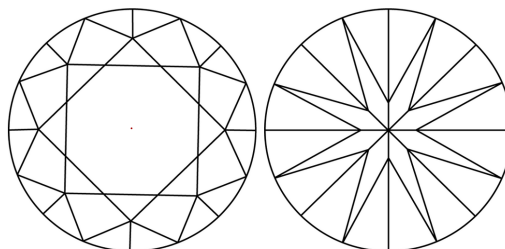
Comments: Pre-existing laser inscription on girdle.
This Laboratory Grown Diamond was created by
Chemical Vapor Deposition (CVD) growth process.
Type IIa

LG675537111
Report verification at [igi.org](https://www.igi.org)

PROPORTIONS

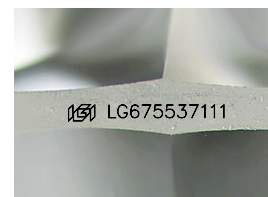


CLARITY CHARACTERISTICS



KEY TO SYMBOLS

Red symbols indicate internal characteristics.
Green symbols indicate external characteristics.



Sample Image Used

COLOR

D E F G H I J Faint Very Light Light

CLARITY

IF WS¹⁻² VS¹⁻² SI¹⁻² |¹⁻³

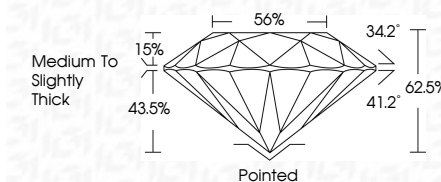
Internally Flawless	Very Very Slightly Included	Very Slightly Included	Slightly Included	Included
------------------------	--------------------------------	---------------------------	----------------------	----------



February 3, 2025	
IGI Report Number	LG675537111
Description	LABORATORY GROWN DIAMOND
Shape and Cutting Style	ROUND BRILLIANT
Measurements	6.46 - 6.47 X 4.04 MM

GRADING RESULTS

Carat Weight	1.04 CARAT
Color Grade	E
Clarity Grade	VVS 1
Cut Grade	IDEAL



ADDITIONAL GRADING INFORMATION

Polish	VERY GOOD
Symmetry	EXCELLENT
Fluorescence	NONE
Inscription(s)	 LG-675537111

Comments: Pre-existing laser inscription on girdle.
This Laboratory Grown Diamond was created by
Chemical Vapor Deposition (CVD) growth process.
Type IIa



© IGI 2020, International Gemological Institute

FD - 10 20



THIS DOCUMENT WAS PRODUCED WITH THE FOLLOWING SECURITY MEASURES: SPECIAL DOCUMENT PAPER, INK SCREENS, WATERMARK, BACKGROUND DESIGNS, HOLOGRAM AND OTHER SECURITY FEATURES NOT LISTED AND DO EXCEED DOCUMENT SECURITY INDUSTRY GUIDELINE

www.igi.org

February 3, 2025
GI Report No LG675537111

Report No.	659758711
ROUND BRILLANT	
GROSS WEIGHT	4.46 - 4.47 X 4.04 MM
Carat Weight	E
Color Grade	VVS 1
Clarity Grade	IDEAL
Cut Grade	62.5%
Depth	56%
Table	Medium to slightly Thick
Girdle	
Culet	painted
Polish	VERY GOOD
Symmetry	EXCELLENT
Fluorescence	NONE
Treatment Notes:	see LC#758711

Comments:
Pre-existing laser inscription on grade. This Laboratory Grown Diamond was created by Chemical Vapor Deposition (CVD) growth process.