

ELECTRONIC COPY

LABORATORY GROWN DIAMOND REPORT

January 16, 2025	
IGI Report Number	LG675589809
Description	LABORATORY GROWN DIAMOND
Shape and Cutting Style	ROUND BRILLIANT
Measurements	8.09 - 8.14 X 4.95 MM

GRADING RESULTS

Carat Weight	2.02 CARATS
Color Grade	E
Clarity Grade	VS 2
Cut Grade	EXCELLENT

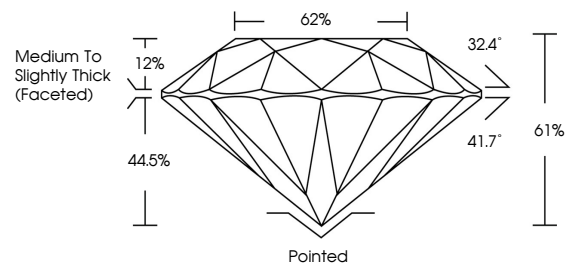
ADDITIONAL GRADING INFORMATION

Polish	EXCELLENT
Symmetry	EXCELLENT
Fluorescence	NONE
Inscription(s)	LG675589809

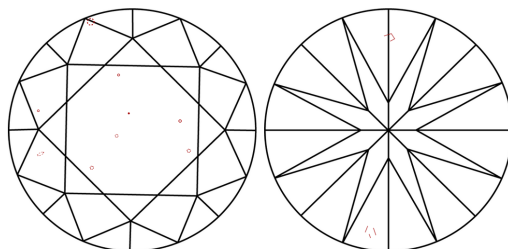
Comments: This Laboratory Grown Diamond was created by Chemical Vapor Deposition (CVD) growth process.
Type IIa

LG675589809
Report verification at igi.org

PROPORTIONS

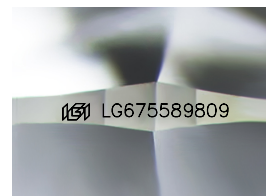


CLARITY CHARACTERISTICS



KEY TO SYMBOLS

Red symbols indicate internal characteristics.
Green symbols indicate external characteristics.



Sample Image Used

COLOR

D E F G H I J Faint Very Light Light

CLARITY

IF WS¹⁻² VS¹⁻² SI¹⁻² |¹⁻³

Internally Flawless	Very Very Slightly Included	Very Slightly Included	Slightly Included	Included
------------------------	--------------------------------	---------------------------	----------------------	----------

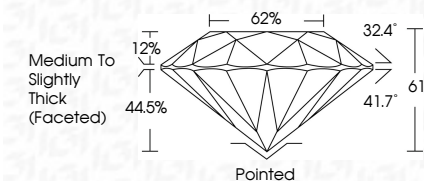
LABORATORY GROWN DIAMOND REPORT



January 16, 2025	
IGI Report Number	LG675589809
Description	LABORATORY GROWN DIAMOND
Shape and Cutting Style	ROUND BRILLIANT
Measurements	8.09 - 8.14 X 4.95 MM

GRADING RESULTS

Carat Weight	2.02 CARATS
Color Grade	E
Clarity Grade	VS 2
Cut Grade	EXCELLENT



ADDITIONAL GRADING INFORMATION

Polish	EXCELLENT
Symmetry	EXCELLENT
Fluorescence	NONE
Inscription(s)	 LG675589809
Comments: This Laboratory Grown Diamond was created by Chemical Vapor Deposition (CVD) growth process.	
Type IIa	



© IGI 2020, International Gemological Institute

FD - 10 20

January 16, 2025
IGI Report No LG675589809
ROUND BRILLIANT

	8.09 - 8.14 x 4.95 MM		
Carat Weight			2.02 CARATS
Color Grade		E	
Clarity Grade	VS 2		
Cut Grade	EXCELLENT		
Depth	61%		
Table	62%		
Girdle	Medium to Slightly Thick (Faceted)		
Culet	Pointed		
Polish	EXCELLENT		
Symmetry	EXCELLENT		
Fluorescence	NONE		

Comments:
This Laboratory Grown Diamond was created by Chemical Vapor Deposition (CVD) growth process.