



**ELECTRONIC COPY**

## LABORATORY GROWN DIAMOND REPORT

|                         |                          |
|-------------------------|--------------------------|
| February 11, 2025       |                          |
| IGI Report Number       | LG677520226              |
| Description             | LABORATORY GROWN DIAMOND |
| Shape and Cutting Style | ROUND BRILLIANT          |
| Measurements            | 7.99 - 8.05 X 5.02 MM    |
| GRADING RESULTS         |                          |
| Carat Weight            | 2.00 CARATS              |
| Color Grade             | D                        |
| Clarity Grade           | INTERNALLY FLAWLESS      |
| Cut Grade               | IDEAL                    |

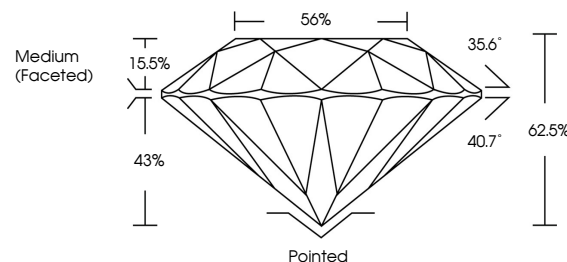
### ADDITIONAL GRADING INFORMATION

|                |                 |
|----------------|-----------------|
| Polish         | EXCELLENT       |
| Symmetry       | EXCELLENT       |
| Fluorescence   | NONE            |
| Inscription(s) | 161 LG677520226 |

Comments: HEARTS & ARROWS  
As Grown - No indication of post-growth treatment.  
This Laboratory Grown Diamond was created by High  
Pressure High Temperature (HPHT) growth process.  
Type II

LG677520226  
Report verification at [lgi.org](https://lgi.org)

## PROPORTIONS

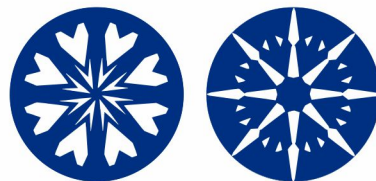


## CLARITY CHARACTERISTICS

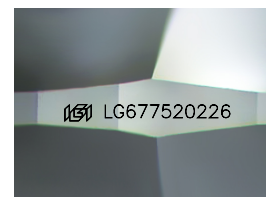


### KEY TO SYMBOLS

Red symbols indicate internal characteristics.  
Green symbols indicate external characteristics.



**www.igi.org**



Sample Image Used

## COLOR

D E F G H I J Faint Very Light Light

## CLARITY

IF WS<sup>1-2</sup> VS<sup>1-2</sup> SI<sup>1-2</sup> |<sup>1-3</sup>

| Internally<br>Flawless | Very Very<br>Slightly Included | Very<br>Slightly Included | Slightly<br>Included | Included |
|------------------------|--------------------------------|---------------------------|----------------------|----------|
|------------------------|--------------------------------|---------------------------|----------------------|----------|



© IGI 2020, International Gemological Institute

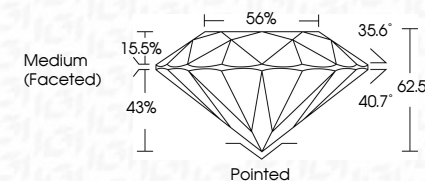
FD - 10 20

THIS DOCUMENT WAS PRODUCED WITH THE FOLLOWING SECURITY MEASURES: SPECIAL DOCUMENT PAPER, INK SCREENS, WATERMARK, BACKGROUND DESIGNS, HOLOGRAM AND OTHER SECURITY FEATURES NOT LISTED AND DO EXCEED DOCUMENT SECURITY INDUSTRY GUIDELINE

## LABORATORY GROWN DIAMOND REPORT



|                         |                          |
|-------------------------|--------------------------|
| February 11, 2025       |                          |
| IGI Report Number       | LG677520226              |
| Description             | LABORATORY GROWN DIAMOND |
| Shape and Cutting Style | ROUND BRILLIANT          |
| Measurements            | 7.99 - 8.05 X 5.02 MM    |
| <b>GRADING RESULTS</b>  |                          |
| Carat Weight            | 2.00 CARATS              |
| Color Grade             | D                        |
| Clarity Grade           | INTERNALLY FLAWLESS      |
| Cut Grade               | IDEAL                    |



### ADDITIONAL GRADING INFORMATION

|  |                            |
|--|----------------------------|
| Polish   | EXCELLENT                  |
| Symmetry   | EXCELLENT                  |
| Fluorescence   | NONE                       |
| Inscription(s)   | <del>161</del> LG677520226 |
| Comments: HEARTS & ARROWS  |                            |
| As Grown - No indication of post-growth treatment.   |                            |
| This Laboratory Grown Diamond was created by High Pressure High Temperature (HPHT) growth process. |                            |
| Type II  |                            |



IG

February 11, 2025  
IGI Report No LG677520226  
ROUND BRILLIANT

|                       |               |                  |
|-----------------------|---------------|------------------|
| 9.99 - 8.05 X 5.02 MM | Carat Weight  | 2.00 CARATS      |
|                       | Color Grade   | D                |
|                       | Clarity Grade | IF               |
|                       | Cut Grade     | IDEAL            |
|                       | Depth         | 62.5%            |
|                       | Table         | 56%              |
|                       | Girdle        | Medium (Faceted) |
|                       | Culet         | Pointed          |
|                       | Polish        | EXCELLENT        |
|                       | Symmetry      | EXCELLENT        |
|                       | Fluorescence  | NONE             |

**Comments:**  
**HEARTS & ARROWS**  
As Grown - No indication of post-growth treatment.  
This Laboratory Grown Diamond was created by High Pressure High temperature (HPHT) growth process.