



ELECTRONIC COPY

LABORATORY GROWN DIAMOND REPORT

February 10, 2025	
IGI Report Number	LG677543378
Description	LABORATORY GROWN DIAMOND
Shape and Cutting Style	ROUND BRILLIANT
Measurements	6.43 - 6.46 X 4.02 MM

GRADING RESULTS

Carat Weight	1.02 CARAT
Color Grade	E
Clarity Grade	VVS 1
Cut Grade	IDEAL

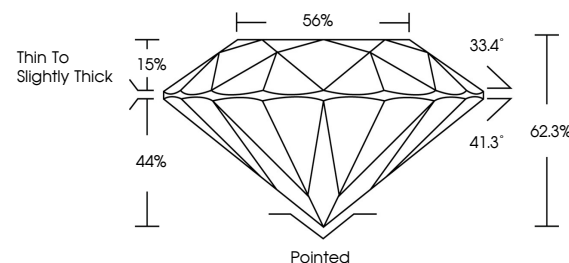
ADDITIONAL GRADING INFORMATION

Polish	VERY GOOD
Symmetry	EXCELLENT
Fluorescence	NONE
Inscription(s)	151 LG677543378

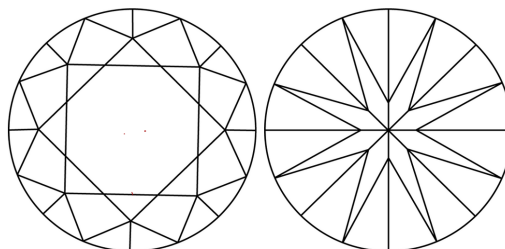
Comments: Pre-existing laser inscription on girdle.
This Laboratory Grown Diamond was created by
Chemical Vapor Deposition (CVD) growth process.
Type IIa

LG677543378
Report verification at igi.org

PROPORTIONS

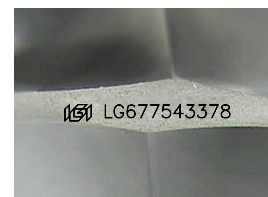


CLARITY CHARACTERISTICS



KEY TO SYMBOLS

Red symbols indicate internal characteristics.
Green symbols indicate external characteristics.



Sample Image Used

COLOR

D E F G H I J Faint Very Light Light

CLARITY

IF WS¹⁻² VS¹⁻² SI¹⁻² |¹⁻³

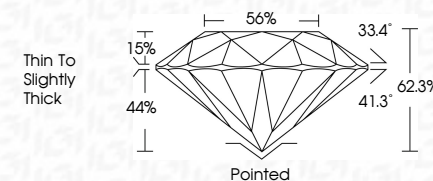
Internally Flawless	Very Very Slightly Included	Very Slightly Included	Slightly Included	Included
------------------------	--------------------------------	---------------------------	----------------------	----------



February 10, 2025	
IGI Report Number	LG677543378
Description	LABORATORY GROWN DIAMOND
Shape and Cutting Style	ROUND BRILLIANT
Measurements	6.43 - 6.46 X 4.02 MM

GRADING RESULTS

Carat Weight	1.02 CARAT
Color Grade	E
Clarity Grade	VVS 1
Cut Grade	IDEAL



ADDITIONAL GRADING INFORMATION

Polish	VERY GOOD
Symmetry	EXCELLENT
Fluorescence	NONE
Inscription(s)	LG6 LG677543378
<p>Comments: Pre-existing laser inscription on girdle. This Laboratory Grown Diamond was created by Chemical Vapor Deposition (CVD) growth process. Type IIa</p>	



© IGI 2020, International Gemological Institute

FD - 10 20



THIS DOCUMENT WAS PRODUCED WITH THE FOLLOWING SECURITY MEASURES: SPECIAL DOCUMENT PAPER, INK SCREENS, WATERMARK, BACKGROUND DESIGNS, HOLOGRAM AND OTHER SECURITY FEATURES NOT LISTED AND DO EXCEED DOCUMENT SECURITY INDUSTRY GUIDELINE

www.igi.org

February 10, 2025
ICI Report No LG677543378
ROUND BRILLIANT

6.43 - 6.46 X 4.02 MM	Carat Weight	1.02 CARAT
	Color Grade	E
	Clarity Grade	VS 1
	Cut Grade	IDEAL
	Depth	62.9%
	Table	56%
	Girdle	Thin to Slightly Thick
	Culet	Pointed
	Polish	VERY GOOD
	Symmetry	EXCELLENT
	Fluorescence	NONE

Comments:
Pre-existing laser inscription on girdle.
This Laboratory Grown Diamond was
created by Chemical Vapor Deposition
(CVD) growth process.