



**ELECTRONIC COPY**

## LABORATORY GROWN DIAMOND REPORT

LG677544431  
Report verification at [igi.org](https://igi.org)

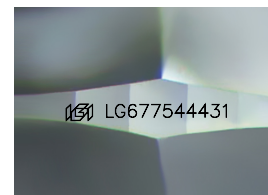
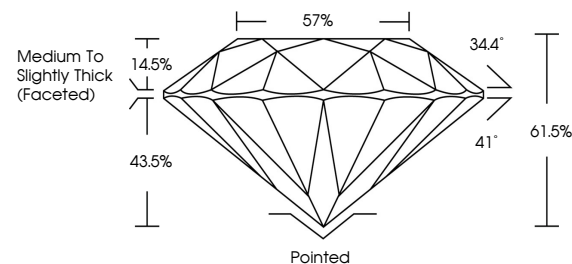
|                         |                          |
|-------------------------|--------------------------|
| January 21, 2025        |                          |
| IGI Report Number       | LG677544431              |
| Description             | LABORATORY GROWN DIAMOND |
| Shape and Cutting Style | ROUND BRILLIANT          |
| Measurements            | 6.44 - 6.46 X 3.97 MM    |
| GRADING RESULTS         |                          |
| Carat Weight            | 1.02 CARAT               |
| Color Grade             | D                        |
| Clarity Grade           | VVS 1                    |
| Cut Grade               | IDEAL                    |

### ADDITIONAL GRADING INFORMATION

|                |                 |
|----------------|-----------------|
| Polish         | EXCELLENT       |
| Symmetry       | EXCELLENT       |
| Fluorescence   | NONE            |
| Inscription(s) | 151 LG677544431 |

Comments: As Grown - No indication of post-growth treatment.  
This Laboratory Grown Diamond was created by High Pressure High Temperature (HPHT) growth process.  
Type II

## PROPORTIONS



Sample Image Used

COLOR

D E F G H I J Faint Very Light Light

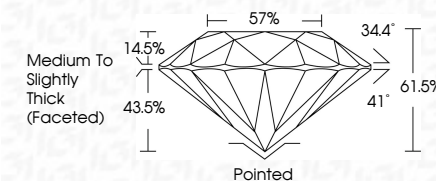
## CLARITY

| IF                  | VVS <sup>1-2</sup>          | VS <sup>1-2</sup>      | SI <sup>1-2</sup> | I <sup>1-3</sup> |
|---------------------|-----------------------------|------------------------|-------------------|------------------|
| Internally Flawless | Very Very Slightly Included | Very Slightly Included | Slightly Included | Included         |


## LABORATORY GROWN DIAMOND REPORT



|                         |                          |
|-------------------------|--------------------------|
| January 21, 2025        |                          |
| IGI Report Number       | LG677544431              |
| Description             | LABORATORY GROWN DIAMOND |
| Shape and Cutting Style | ROUND BRILLIANT          |
| Measurements            | 6.44 - 6.46 X 3.97 MM    |
| GRADING RESULTS         |                          |
| Carat Weight            | 1.02 CARAT               |
| Color Grade             | D                        |
| Clarity Grade           | VVS1                     |
| Cut Grade               | IDEAL                    |



### ADDITIONAL GRADING INFORMATION

|  |  |
|--|--|
| Polish   | EXCELLENT  |
| Symmetry   | EXCELLENT  |
| Fluorescence   | NONE   |
| Inscription(s)   |  LG67754443 |
| Comments: As Grown - No indication of post-growth treatment.                                       |  |
| This Laboratory Grown Diamond was created by High Pressure High Temperature (HPHT) growth process. |  |
| Type II  |  |



© IGI 2020, International Gemological Institute

FD - 10 20



THIS DOCUMENT WAS PRODUCED WITH THE FOLLOWING SECURITY MEASURES: SPECIAL DOCUMENT PAPER, INK SCREENS, WATERMARK, BACKGROUND DESIGNS, HOLOGRAM AND OTHER SECURITY FEATURES NOT LISTED AND DO EXCEED DOCUMENT SECURITY INDUSTRY GUIDELINES

**www.igi.org**

January 21, 2025  
GI Report No LG677544431  
ROUND BRILLIANT

|              |             |               |           |       |       |                                    |         |           |           |              |                  |
|--------------|-------------|---------------|-----------|-------|-------|------------------------------------|---------|-----------|-----------|--------------|------------------|
| 1.02 CARAT   | D           | VVS 1         | IDEAL     | 61.5% | 57%   | Medium to Slightly Thick (Faceted) | Pointed | EXCELLENT | EXCELLENT | NONE         | 4mm 1.5275754431 |
| Carat Weight | Color Grade | Clarity Grade | Cut Grade | Depth | Table | Grade                              | Culet   | Polish    | Symmetry  | Fluorescence | Comments         |

**Comments:**  
As Grown - No indication of post-growth treatment.  
This Laboratory Grown Diamond was created by High Pressure High Temperature (HPHT) growth process.