

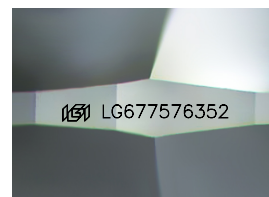
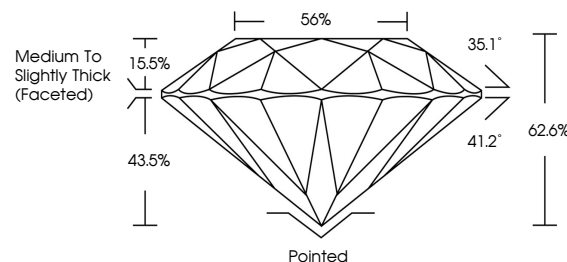


ELECTRONIC COPY

LABORATORY GROWN DIAMOND REPORT

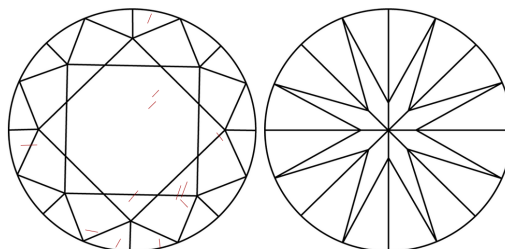
LG677576352
Report verification at lgi.org

PROPORTIONS



Sample Image Used

CLARITY CHARACTERISTICS



KEY TO SYMBOLS

Red symbols indicate internal characteristics.
Green symbols indicate external characteristics.

COLOR

D E F G H I J Faint Very Light Light

CLARITY

IF WS¹⁻² VS¹⁻² SI¹⁻² |¹⁻³

Internally Flawless	Very Very Slightly Included	Very Slightly Included	Slightly Included	Included
------------------------	--------------------------------	---------------------------	----------------------	----------



© IGI 2020, International Gemological Institute

FD - 10 20

www.igi.org

LABORATORY GROWN DIAMOND REPORT



January 24, 2025

IGI Report Number **LG677576352**Description **LABORATORY GROWN DIAMOND**Shape and Cutting Style **ROUND BRILLIANT**

Measurements 7.15 - 7.17 X 4.49 MM

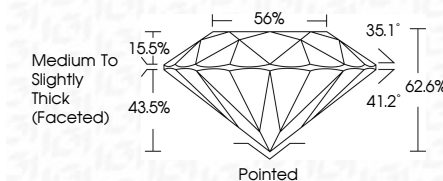
GRADING RESULTS

Carat Weight 1.41 CARAT

Color Grade D

Clarity Grade VS 1

Cut Grade **EXCELLENT**



ADDITIONAL GRADING INFORMATION

Polish **EXCELLENT**Symmetry **EXCELLENT**Fluorescence **NONE**Inscription(s) LG677576352

Comments: As Grown - No indication of post-growth treatment.

This Laboratory Grown Diamond was created by High Pressure High Temperature (HPHT) growth process.

Type II



January 24, 2025	GI Report No LG57/57352	1,41 CARAT	VS 1	Polished	Comments: No Growth - No indication of post-growth from this Laboratory Growth Diamond was created by High Pressure High Temperature (HPHT) growth process. Type II	
ROUND BRILLIANT		D	EXCELLENT	EXCELLENT		
			62.0%	55%		
			Medium to slightly Thick (Faceted)	NONE		
				lg57LG57/57352		
		1.15 x 1.17 x 4.49 MM				
		Carat Weight	Color Grade	Clarity Grade	Cut Grade	
					Depth	
					Table	
					Girdle	
					Culet	
					Polish	
					Symmetry	
					Fluorescence	
					Inscriptions(s)	