

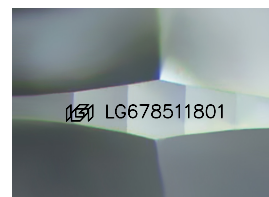
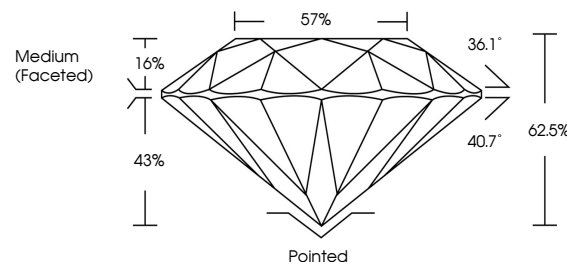


ELECTRONIC COPY

LABORATORY GROWN DIAMOND REPORT

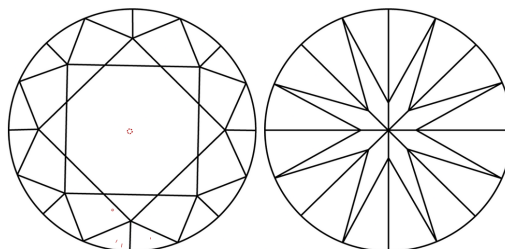
LG678511801
Report verification at lgi.org

PROPORTIONS



Sample Image Used

CLARITY CHARACTERISTICS



KEY TO SYMBOLS

Red symbols indicate internal characteristics.
Green symbols indicate external characteristics.

COLOR

D E F G H I J Faint Very Light Light

CLARITY

IF WS¹⁻² VS¹⁻² SI¹⁻² |¹⁻³

| Internally Flawless | Very Very Slightly Included | Very Slightly Included | Slightly Included | Included |
|------------------------|--------------------------------|---------------------------|----------------------|----------|
|------------------------|--------------------------------|---------------------------|----------------------|----------|



© IGI 2020, International Gemological Institute

FD - 10 20

www.igi.org

LABORATORY GROWN DIAMOND REPORT



March 5, 2025

IGI Report Number **LG678511801**Description **LABORATORY GROWN DIAMOND**Shape and Cutting Style **ROUND BRILLIANT**

Measurements 7.40 - 7.43 X 4.64 MM

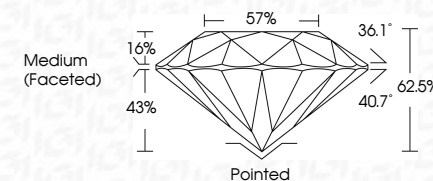
GRADING RESULTS

Carat Weight 1.58 CARAT

Color Grade F

Clarity Grade WS 2

Cut Grade **IDEAL**



ADDITIONAL GRADING INFORMATION

Polish **EXCELLENT**Symmetry **EXCELLENT**Fluorescence **NONE**Inscription(s) LG678511801

Comments: As Grown - No indication of post-growth treatment.

This Laboratory Grown Diamond was created by High Pressure High Temperature (HPHT) growth process.

Type II



IG

| | | | | | | | | | | | | |
|-----------------|-------------------------|--------------|---------------|-----------|-------|------------------|----------|-----------|--------------|------|--------------|---|
| March 5, 2025 | Report No. LG57981 1801 | 1.58 CARAT | VVS 2 | 62.5% | 57% | Medium (Faceted) | Polished | EXCELLENT | EXCELLENT | NONE | lg57981 1801 | <p>Comments:</p> <p>As Seen - No indication of post-growth treatment.</p> <p>This Laboratory Grown Diamond was created by High Pressure High Temperature (HPHT) growth process.</p> <p>Type IIa</p> |
| ROUND BRILLIANT | 4.60 - 7.43 x 4.61 MM | Color Weight | Clarity Grade | Cut Grade | Table | Girdle | Culet | Symmetry | Fluorescence | | | |