

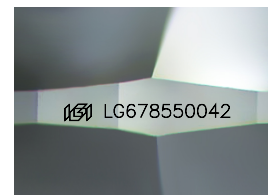
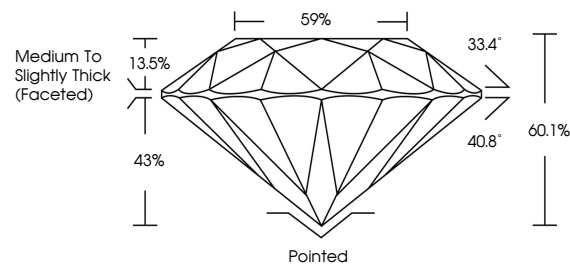


ELECTRONIC COPY

LABORATORY GROWN DIAMOND REPORT

LG678550042
Report verification at igi.org

PROPORTIONS



Sample Image Used

COLOR

D E F G H I J Faint Very Light Light

CLARITY

IF	VVS ¹⁻²	VS ¹⁻²	SI ¹⁻²	I ¹⁻³
Internally Flawless	Very Very Slightly Included	Very Slightly Included	Slightly Included	Included



© IGI 2020, International Gemological Institute

FD - 10 20

www.igi.org

LABORATORY GROWN DIAMOND REPORT



February 12, 2025

IGI Report Number **LG678550042**Description **LABORATORY GROWN DIAMOND**Shape and Cutting Style **ROUND BRILLIANT**

Measurements 6.96 - 6.99 X 4.19 MM

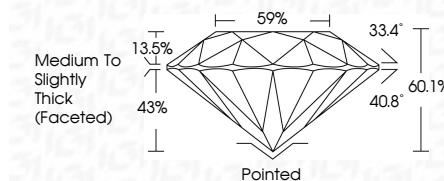
GRADING RESULTS

Carat Weight 1.24 CARAT

Color Grade E

Clarity Grade VS 1

Cut Grade **IDEAL**



ADDITIONAL GRADING INFORMATION

Polish **EXCELLENT**Symmetry **EXCELLENT**Fluorescence **NONE**Inscription(s)  LG678550042

Comments: This Laboratory Grown Diamond was created by Chemical Vapor Deposition (CVD) growth process.
Type IIa



February 12, 2025	
GI Report No. G67855042	
ROUND BRILLIANT	
6.95 - 6.97 X 4.19 MM	1.24 CARAT
Carat Weight	E
Color Grade	VS 1
Clarity Grade	IDEAL
Depth	60.1%
Table	59%
Girdle	Medium to Slightly Thick (Featured)
Culet	Pointed
Polish	EXCELLENT
Symmetry	EXCELLENT
Fluorescence	NONE
Inscription(s)	#61 G67855042
<p>Comments:</p> <p>This Laboratory Grown Diamond was created by Chemical Vapor Deposition (CVD) growth process.</p> <p>Type IIA</p>	